



Dev Story & Art Book

ETERNIGHTS

STUDIOSAI



Title Illustration 3

Early Prototypes 8

Character 13

Story illustration 44

Monster 79

Moving Pictures 100

Environment 108

VFX 126

UI 135



TITLE
ILLUSTRATION









ETERNIGHTS



EARLY PROTOTYPES

2019 Prototypes

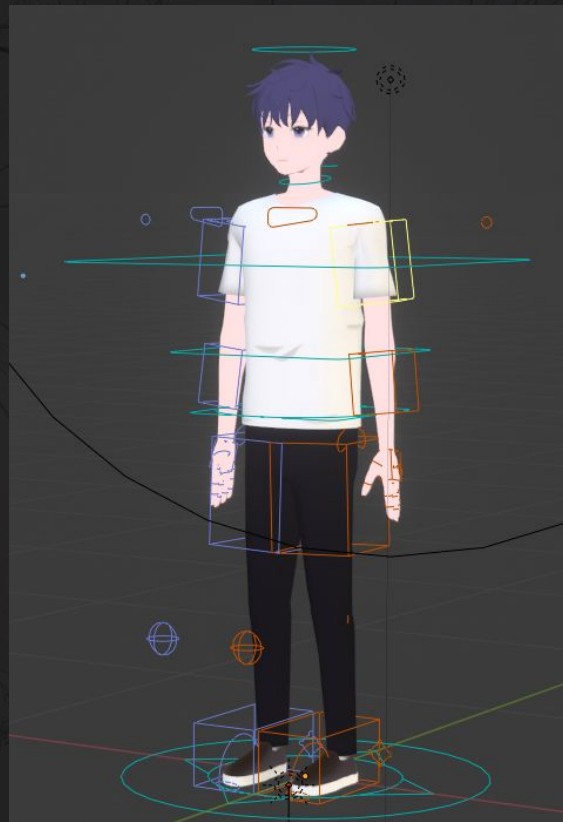


Protagonist & Yuna in 2019



Protagonist & Yuna & Min in 2019

Early 3D Character Modeling & Rigging



2020 Prototypes



Protagonist & Yuna in 2020

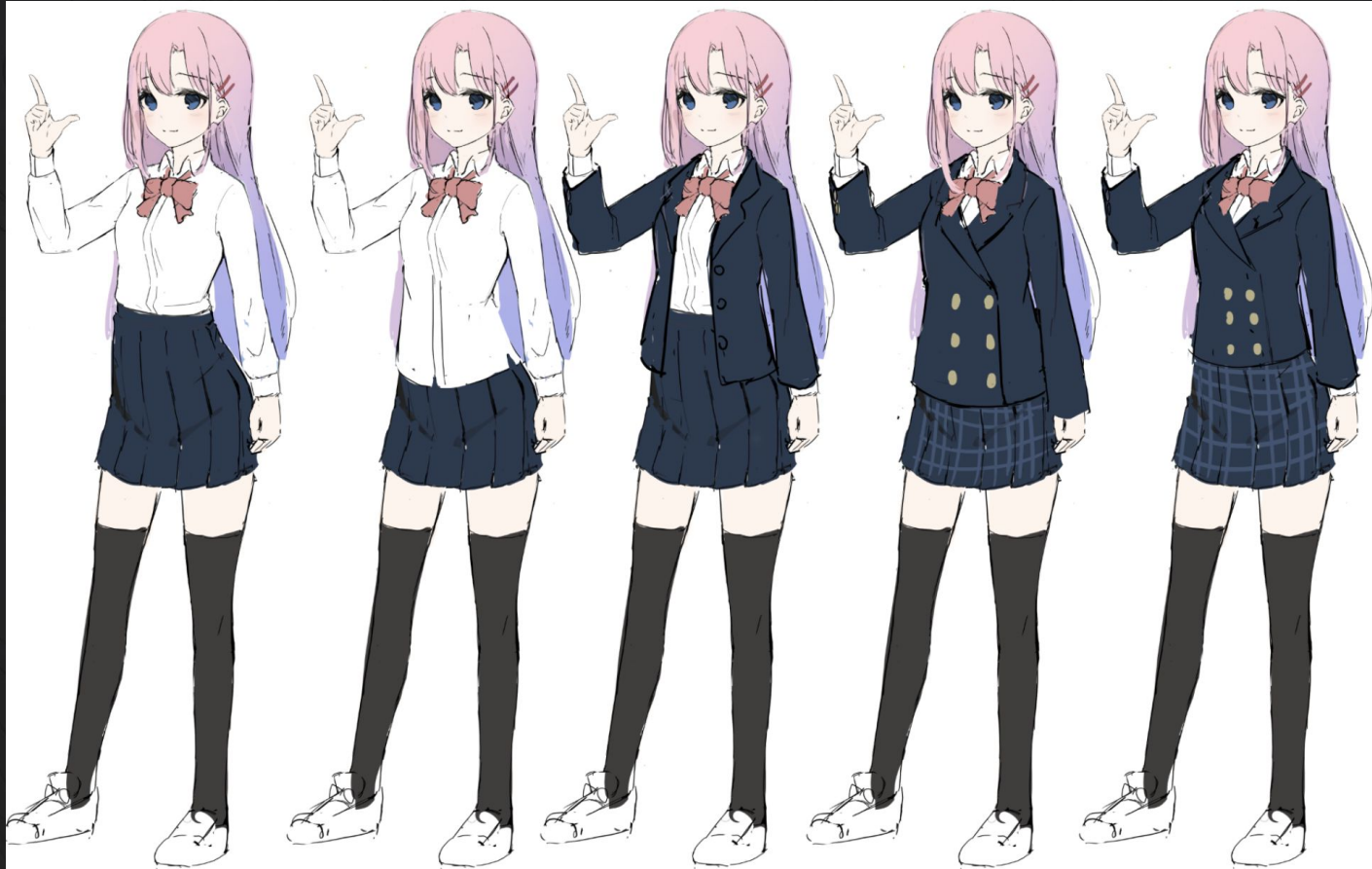
The background of the slide is a dark grey color with faint, light grey line art of several anime-style characters. There are five distinct character portraits scattered across the page, each rendered in a minimalist, sketch-like style. The characters have various hairstyles and expressions, but their features are mostly defined by simple lines and shading. The central focus is the word 'CHARACTER' in a large, bold, white sans-serif font.

CHARACTER

Character Progress



Character Progress



Character Progress



모자란 부분(아이템)을 찾아주세요.

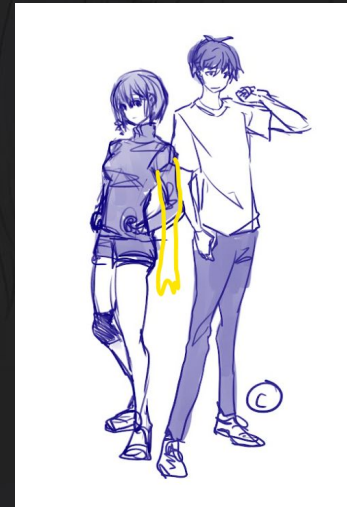
Character Progress



Character Progress



Character Progress



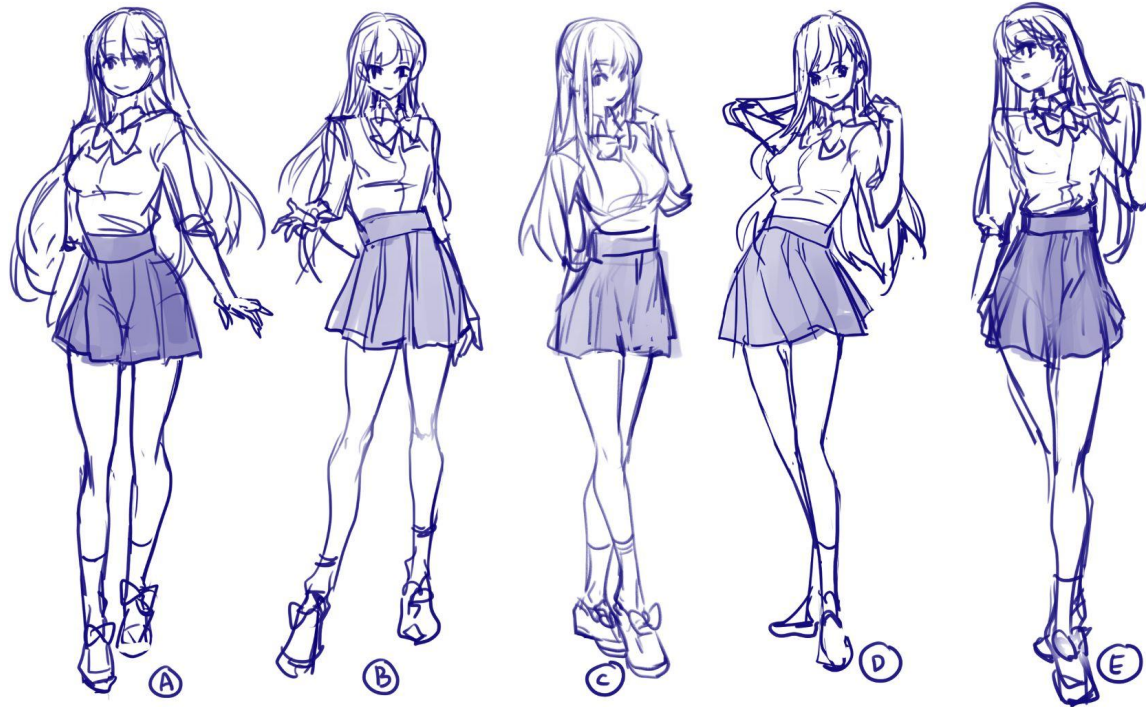
Character Progress



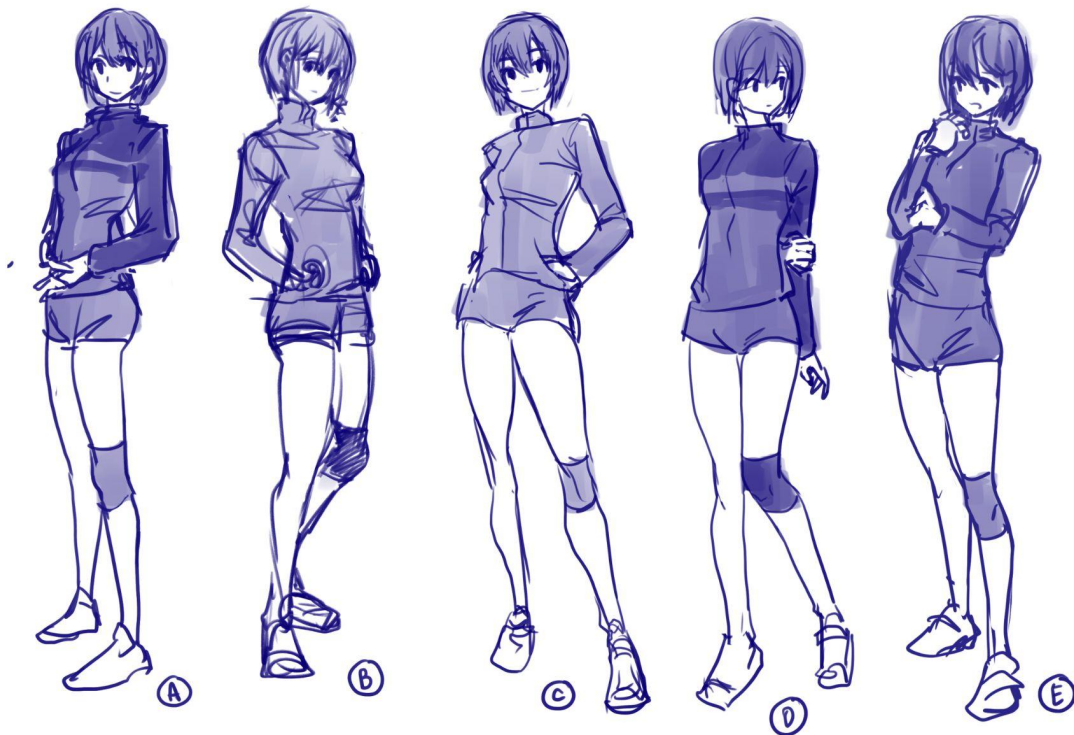
Character Progress



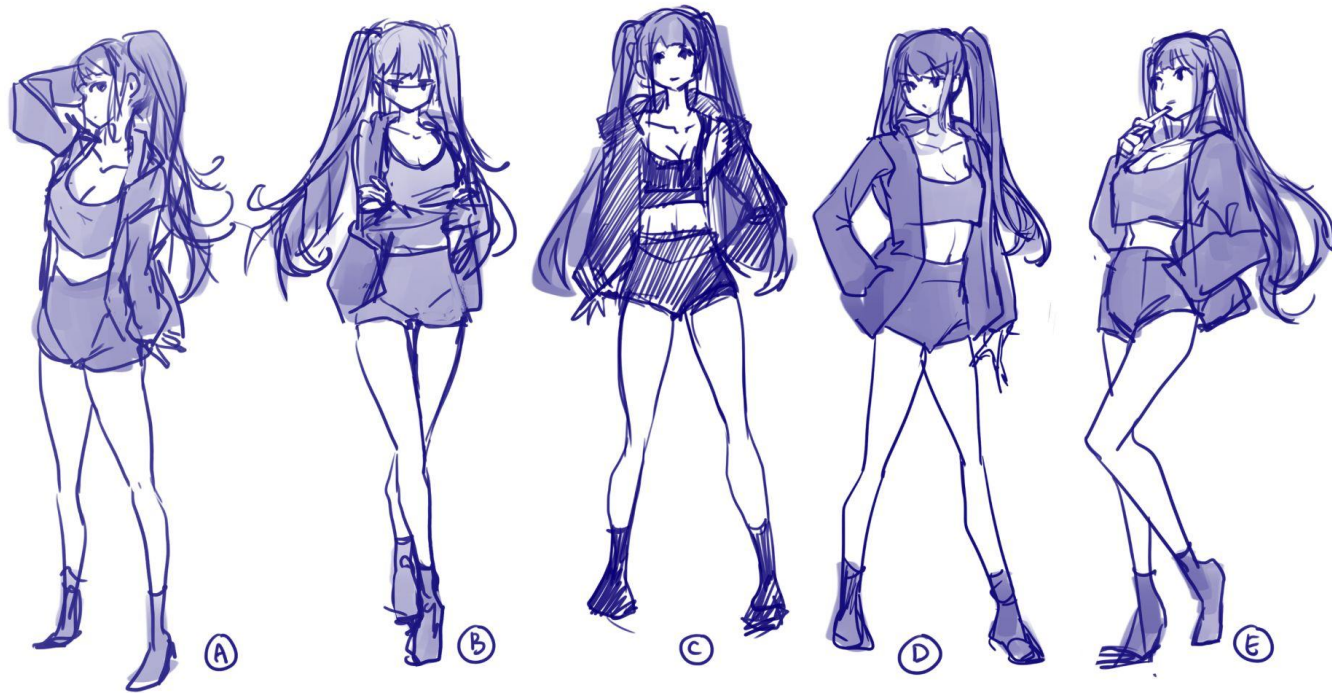
Character Progress



Character Progress



Character Progress



Character Progress



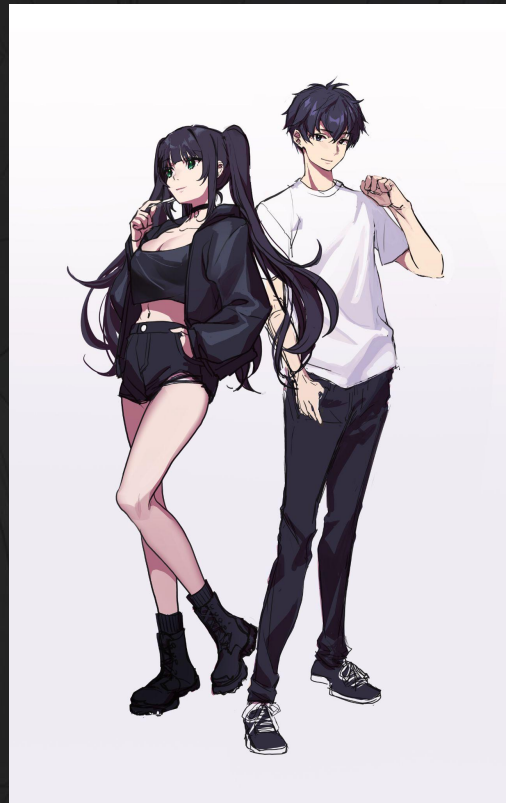
Character Progress



Character Progress



Character Progress



Character Progress



Character Progress



Character
PROTAGONIST



Character Progress



Character
YUNA



Character Progress



Character
MIN



Character Progress



Character
SIA



Character Progress



Character
YOHAN



Character Progress



Character
Progress



Character Progress



Character Progress





**STORY
ILLUSTRATION**

Story
Illustration







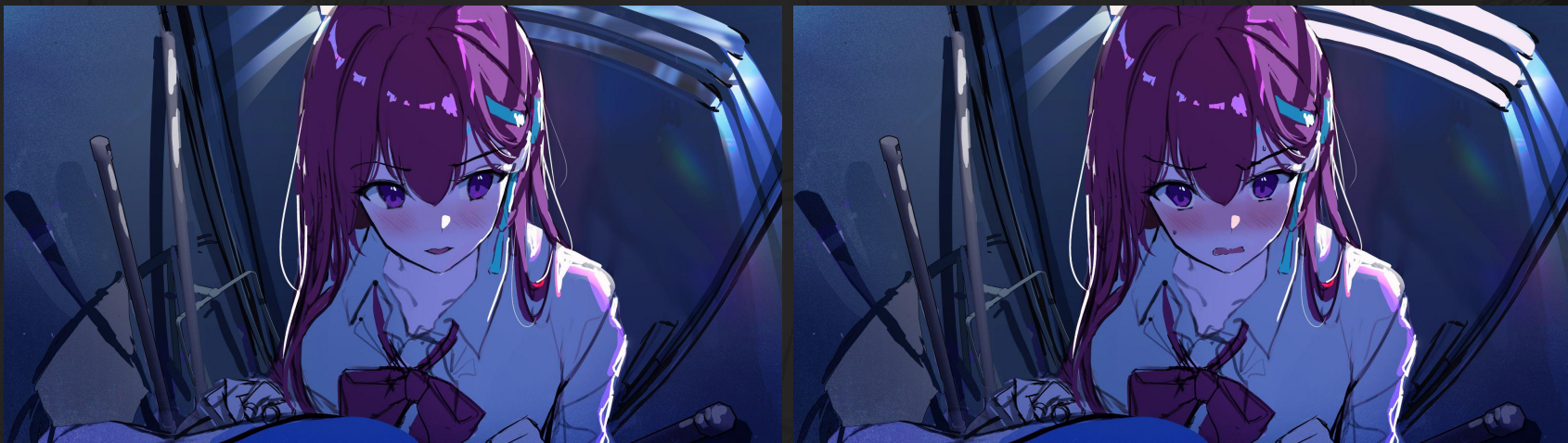


Story
Illustration





Story
Illustration







Story
Illustration







Story
Illustration



Story
Illustration



Story
Illustration





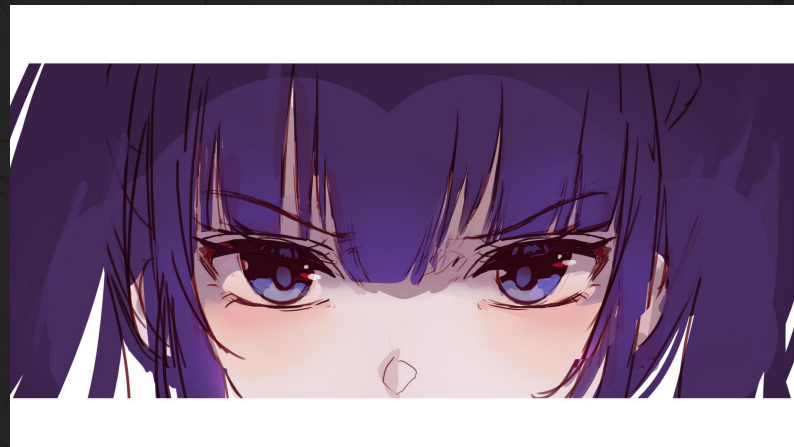
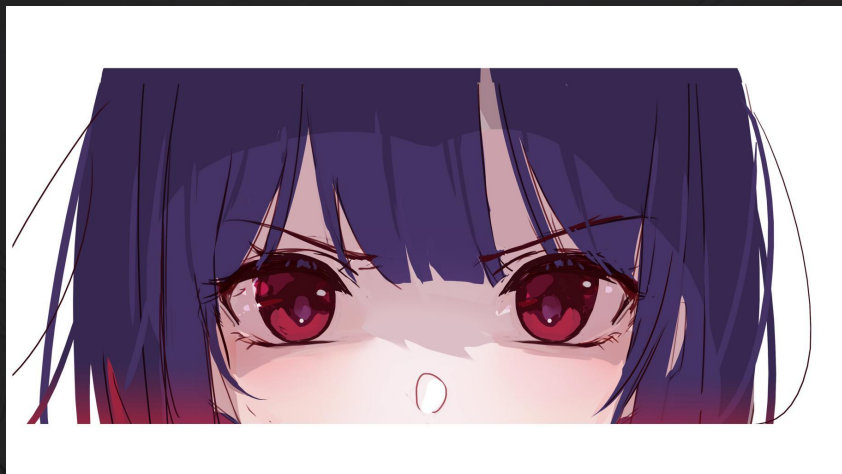
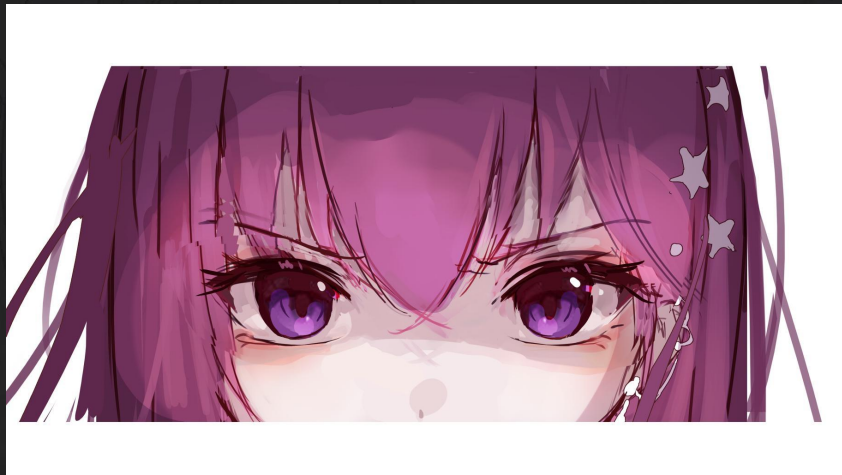
Story
Illustration



Story
Illustration

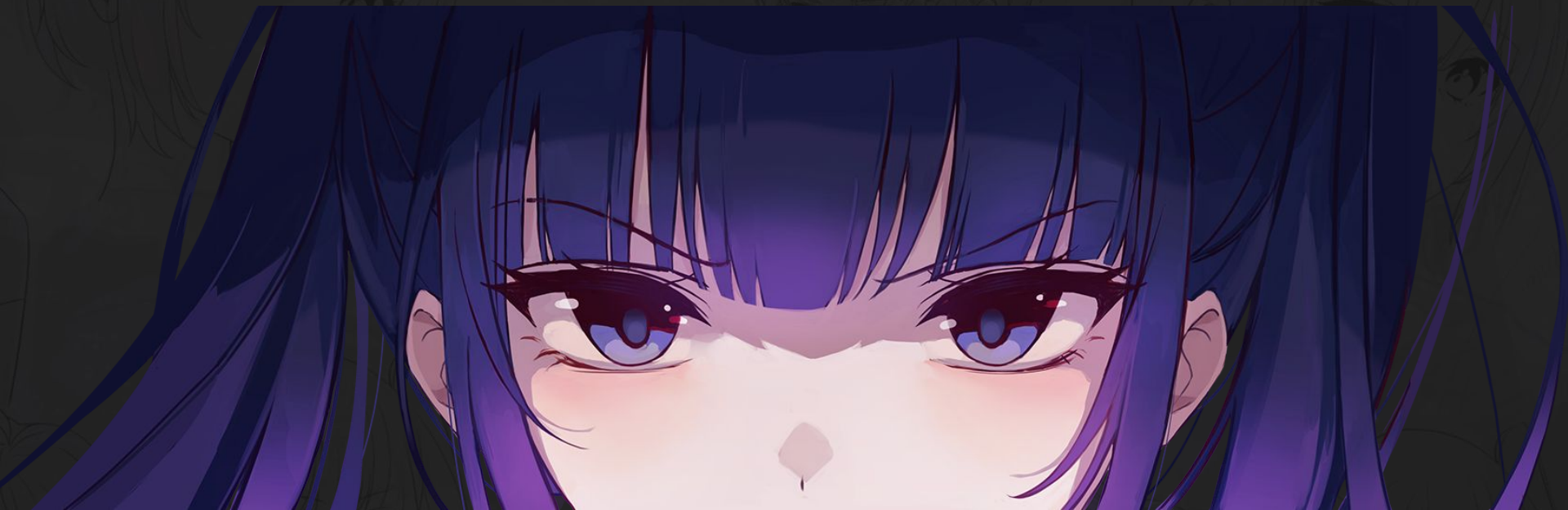


Story
Illustration



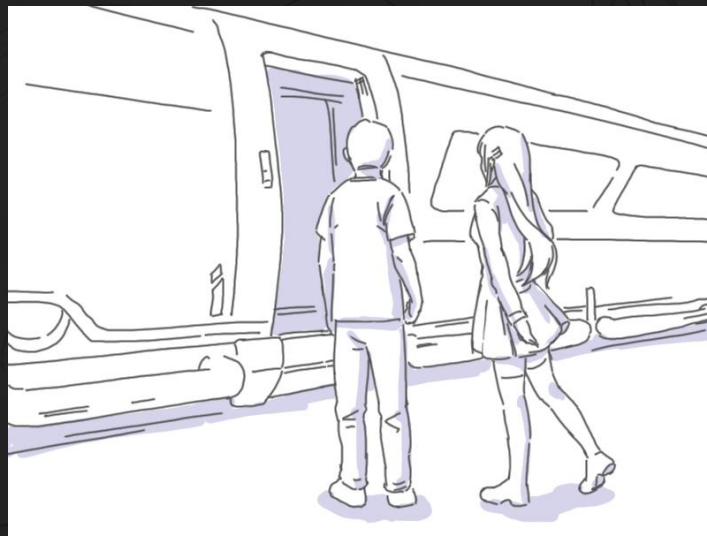
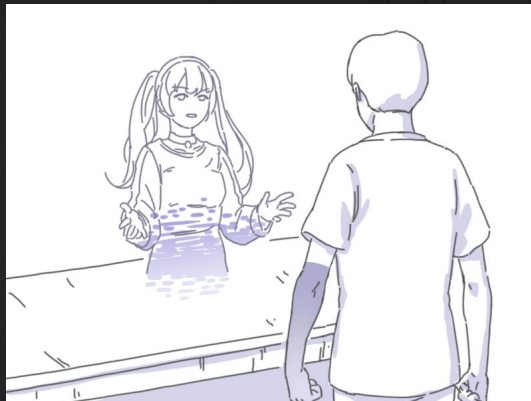








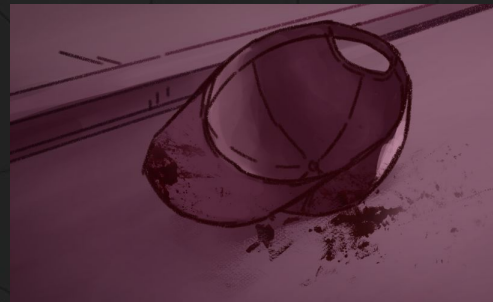
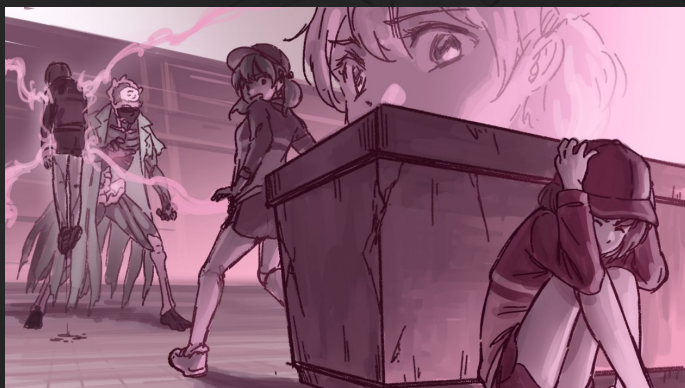
Early Concepts



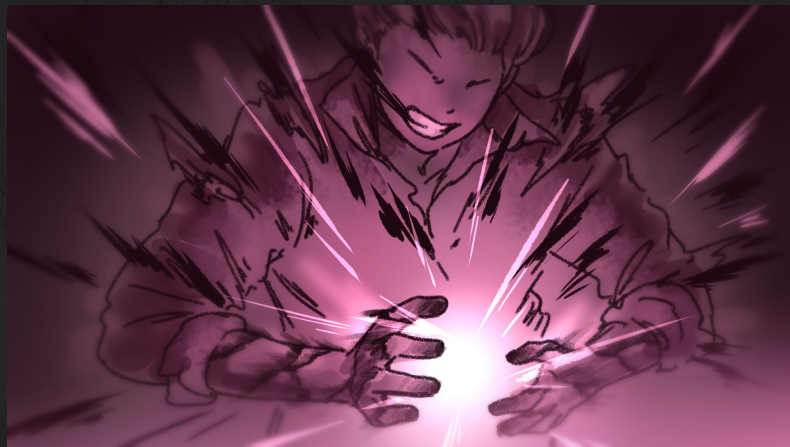
Early Concepts



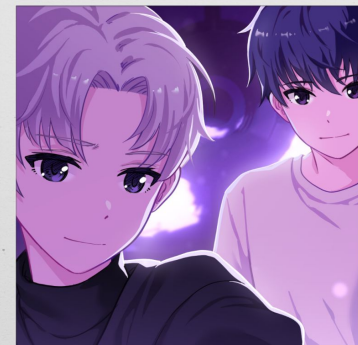
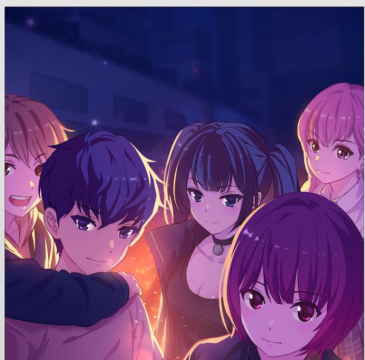
Story
Illustration



Story
Illustration



Story Illustration

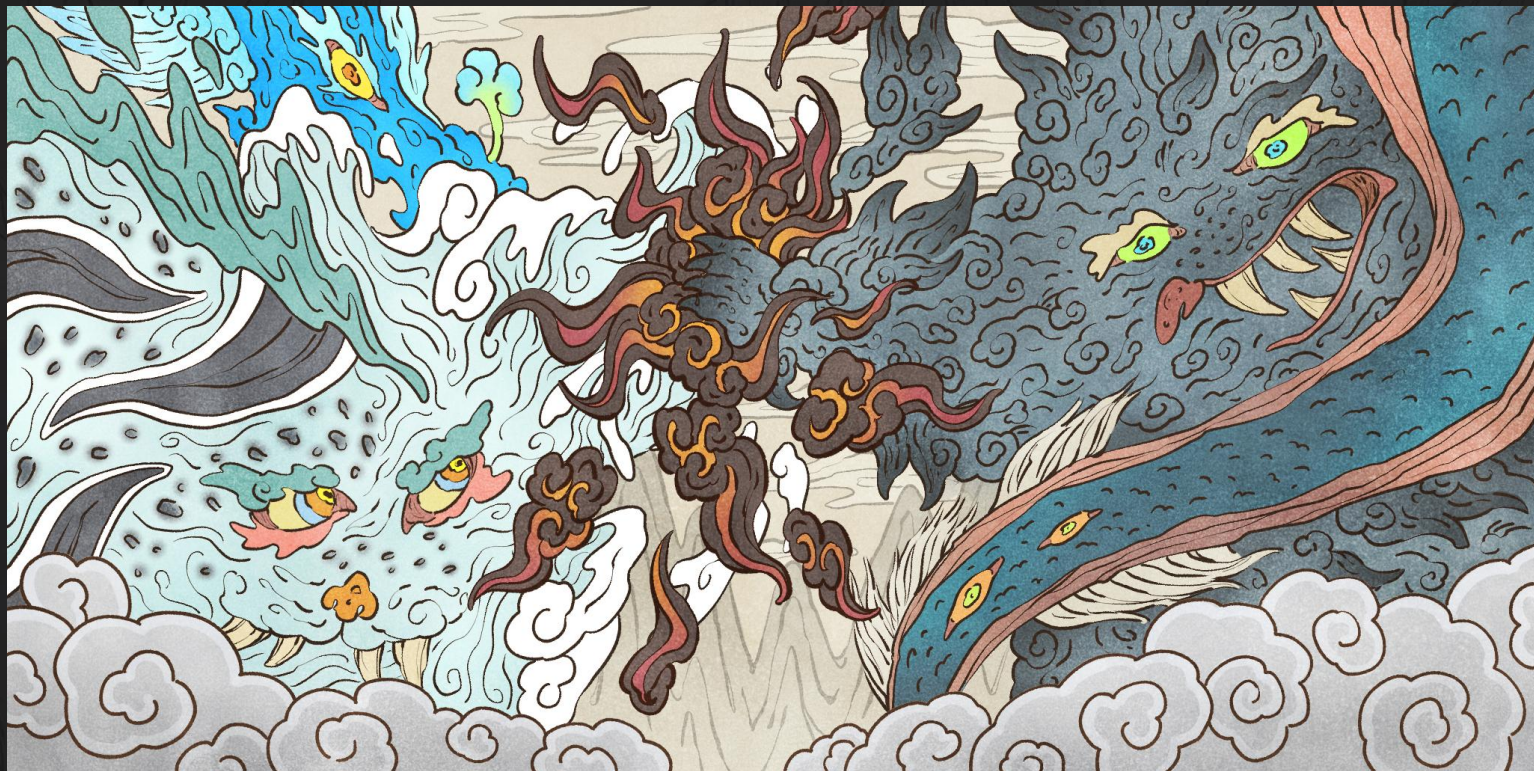


Story
Illustration





Story
Illustration

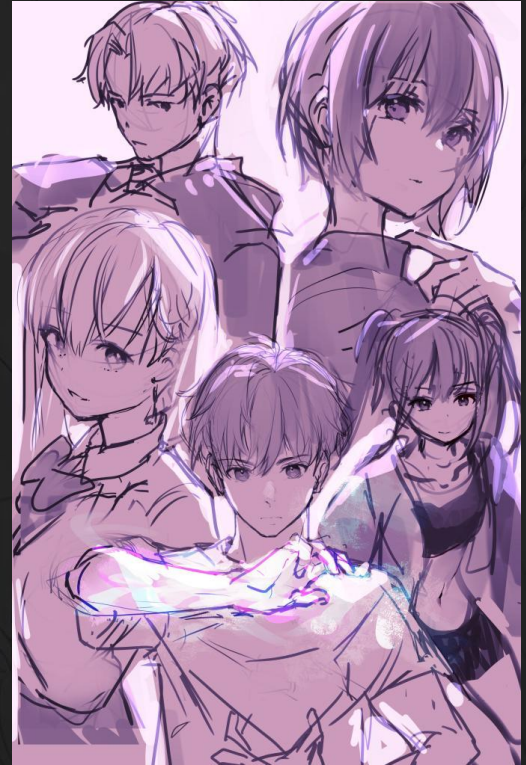








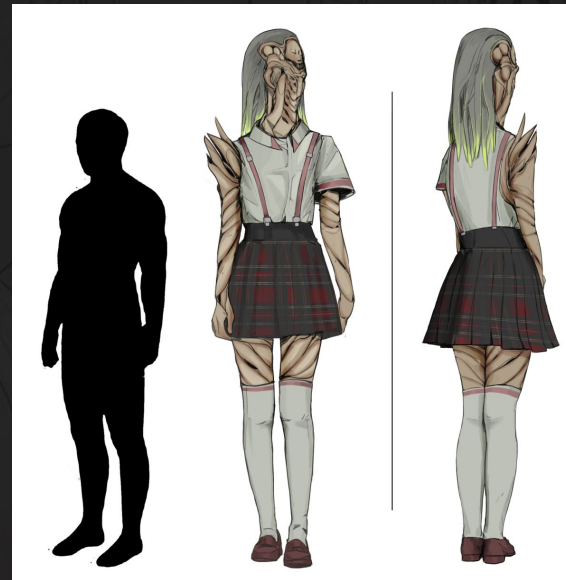
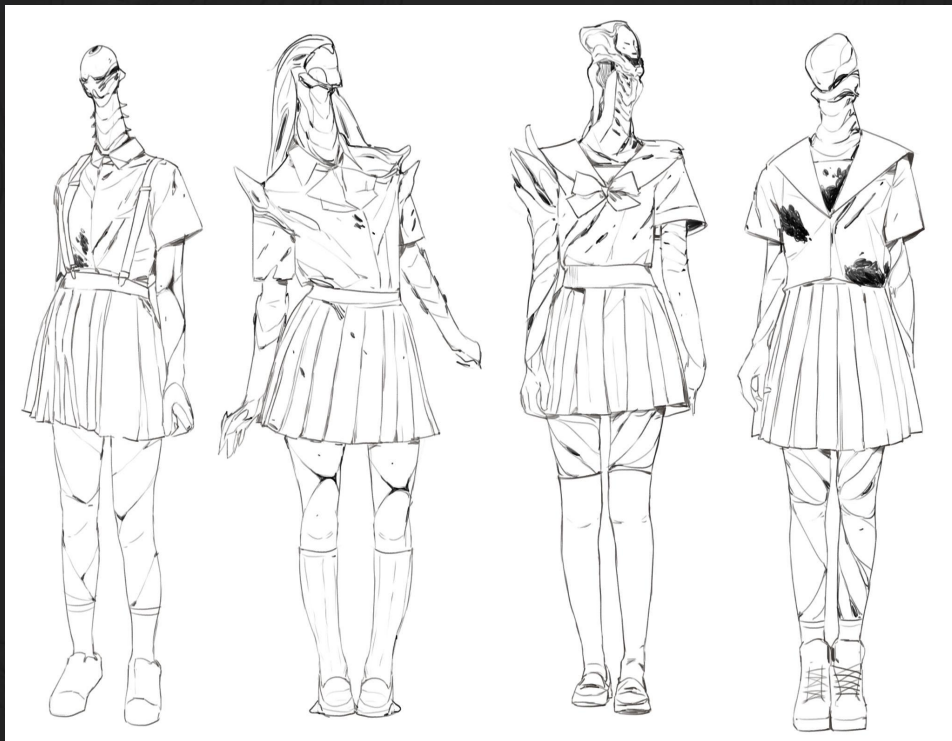
Title
Illustration WIP



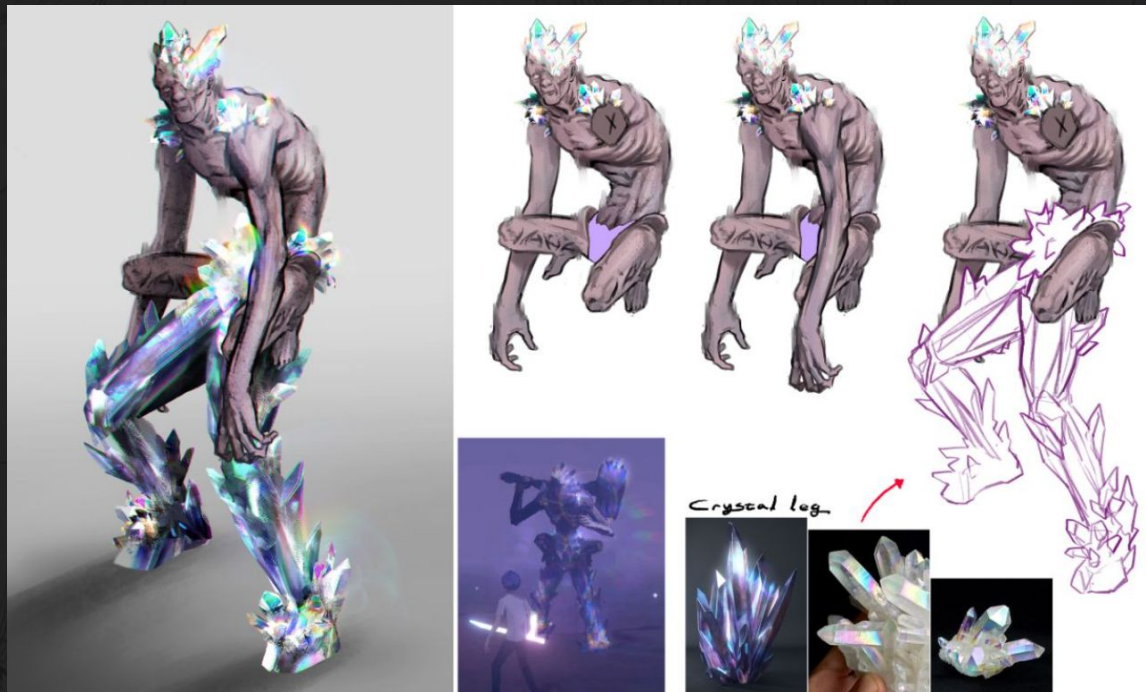
The background features several anime-style characters rendered in a dark grey, line-art style. There are five distinct faces visible: one in the top left, one in the top center, one in the top right, one in the bottom left, and one in the bottom right. The characters have various hairstyles and expressions, typical of anime art.

MONSTER

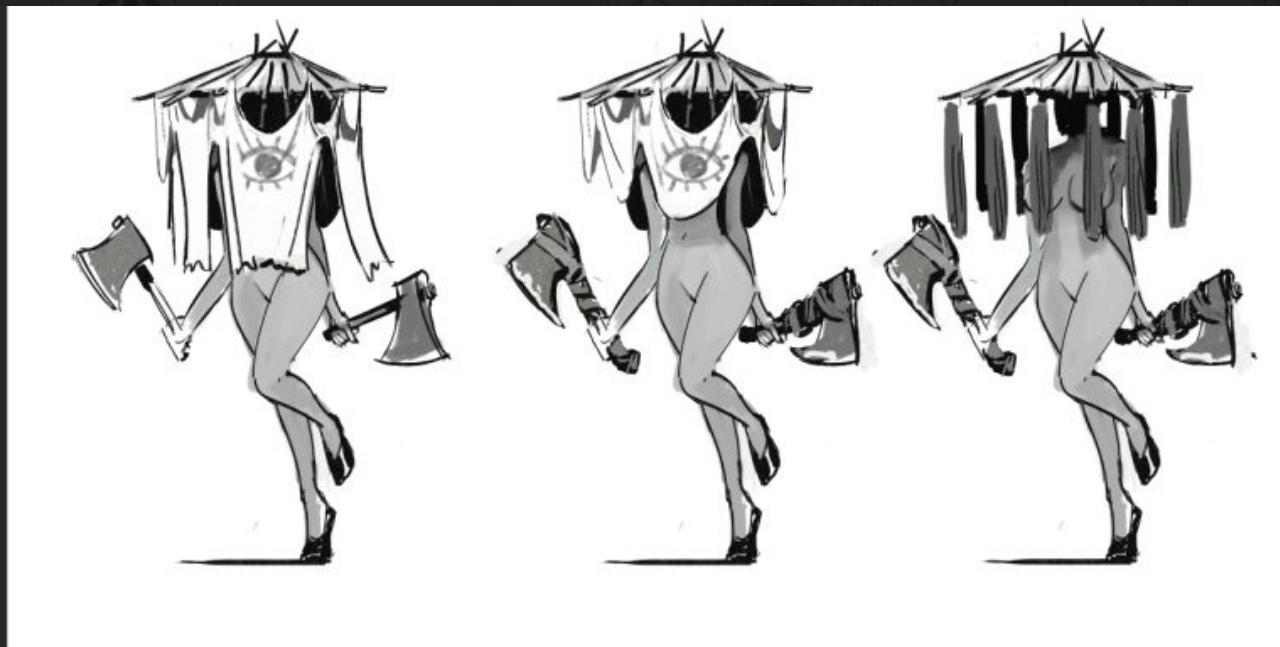
Creature Progress

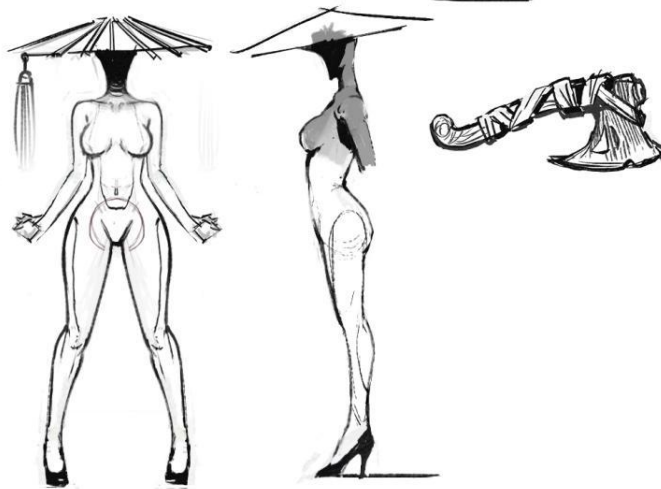


Creature Progress



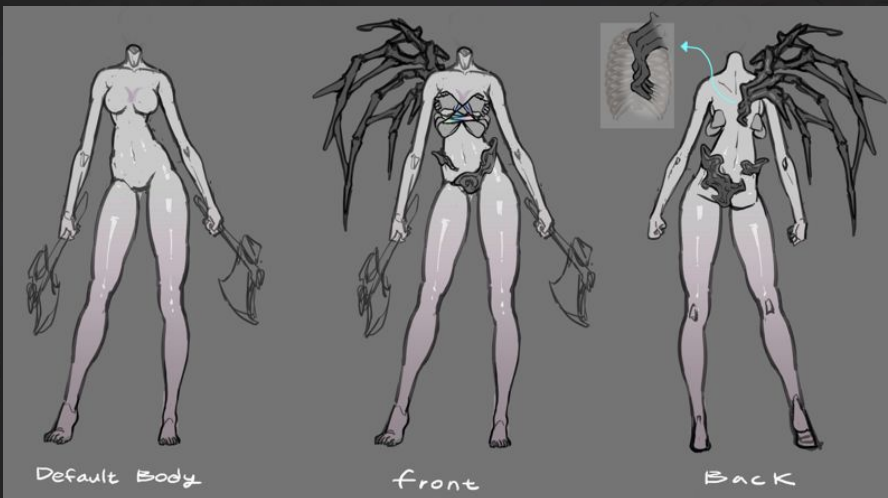
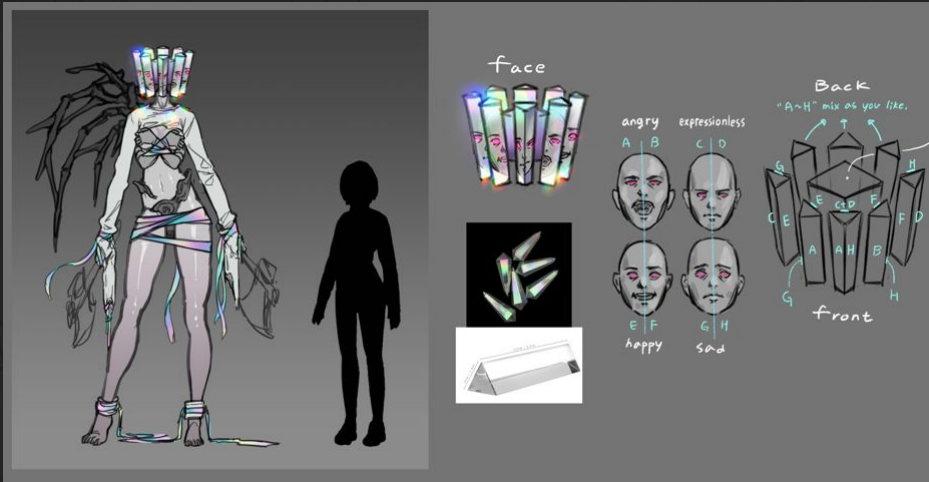
Creature
Progress



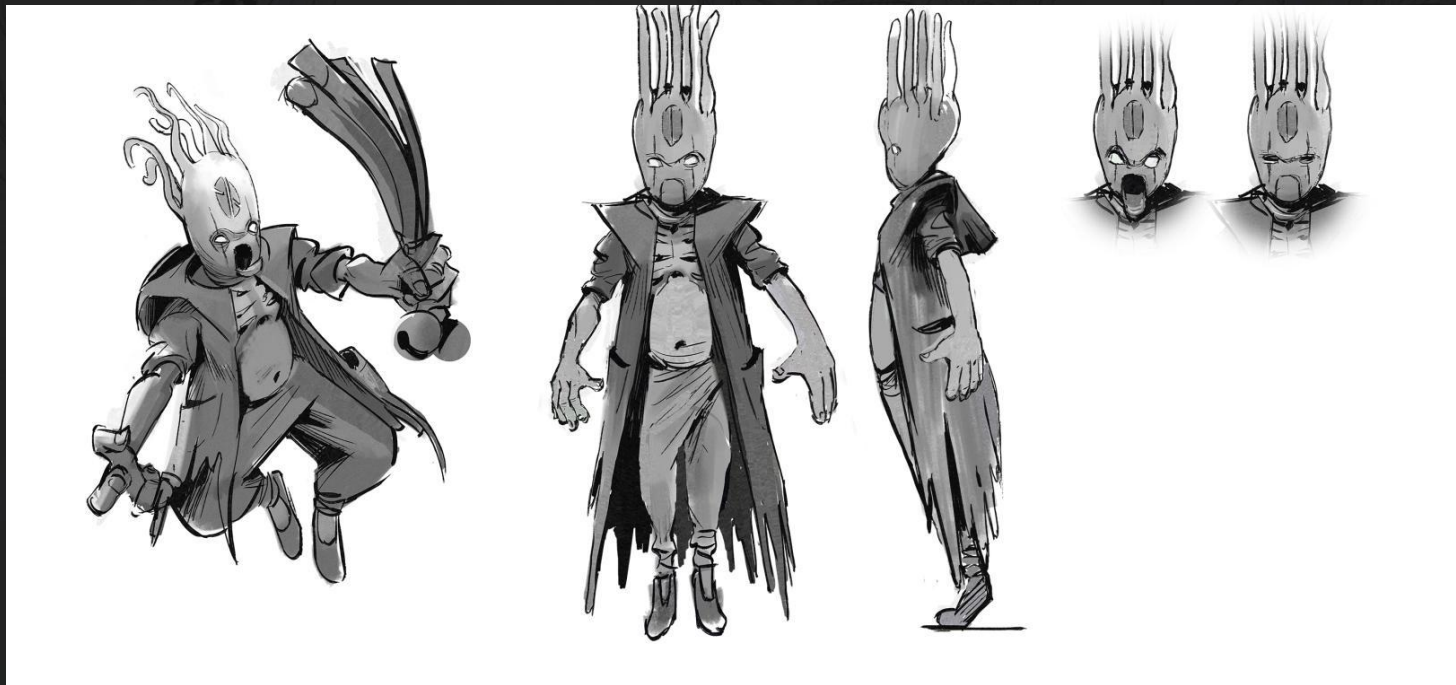


A7

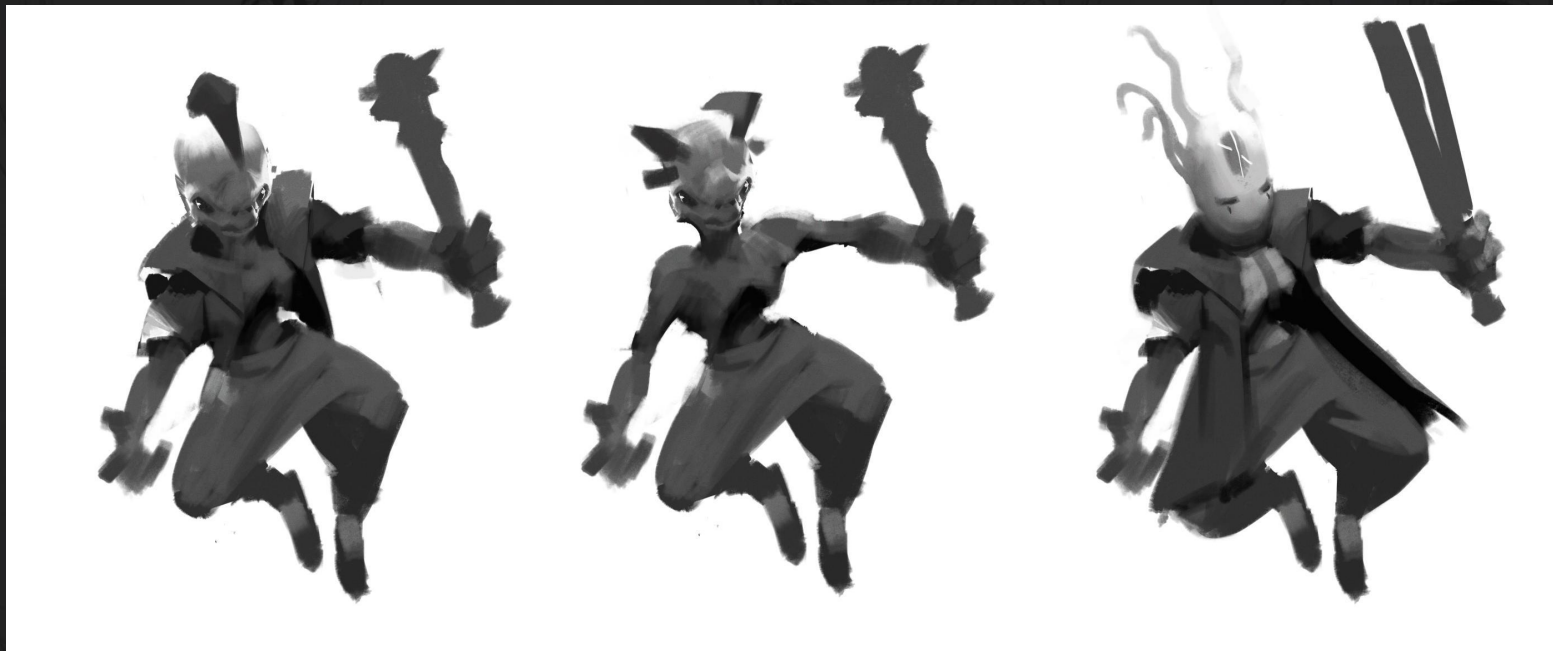
Creature Progress

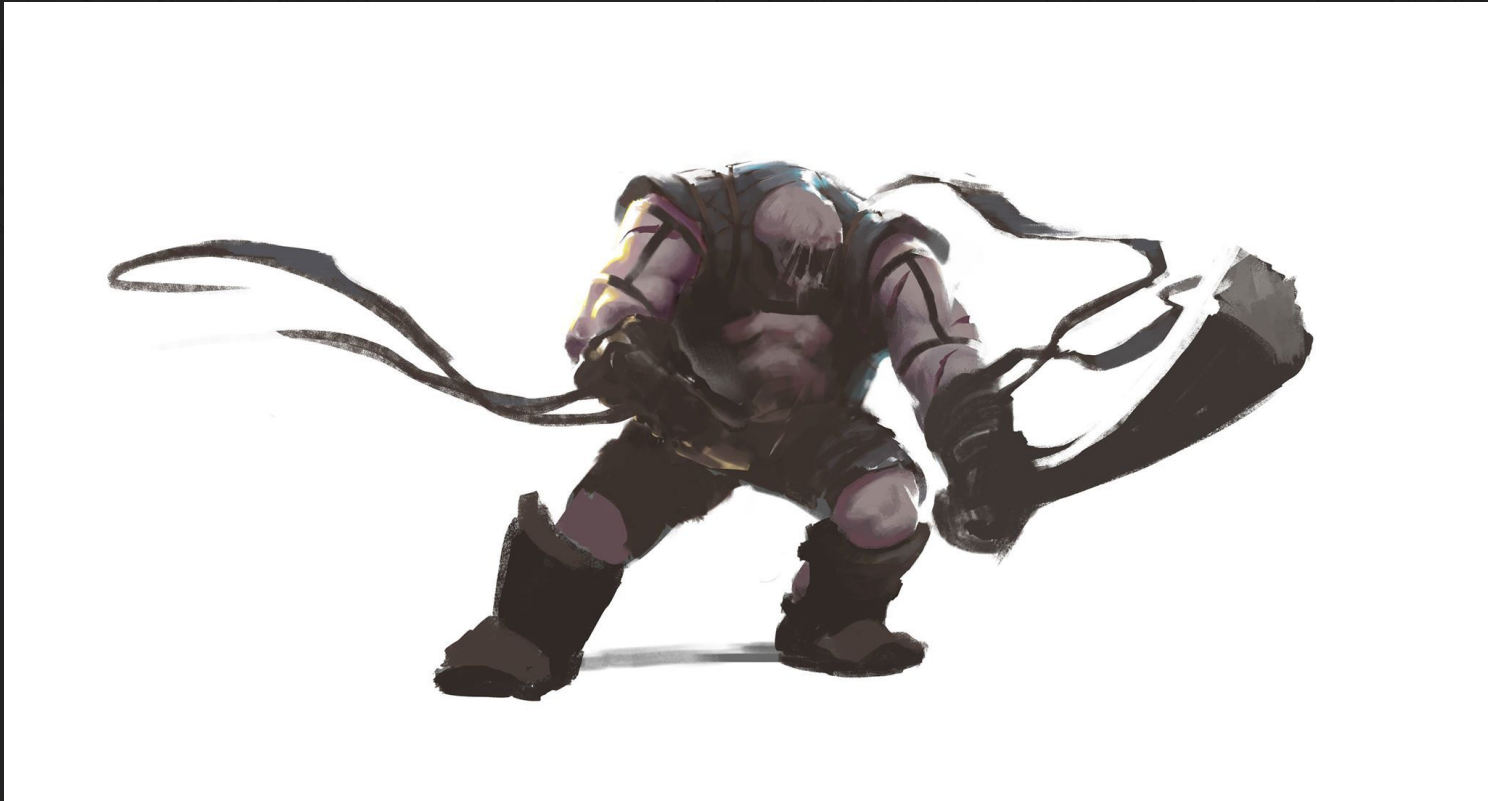


Creature Progress

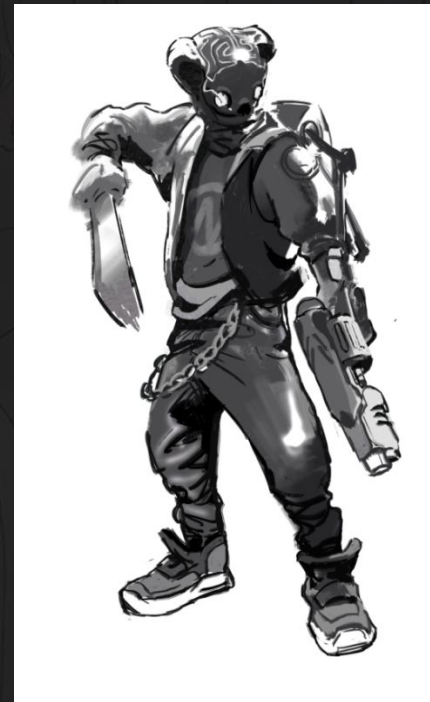
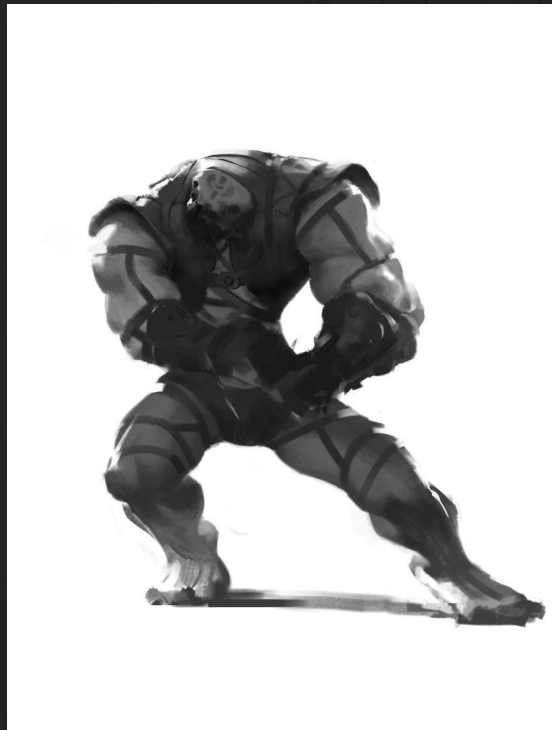
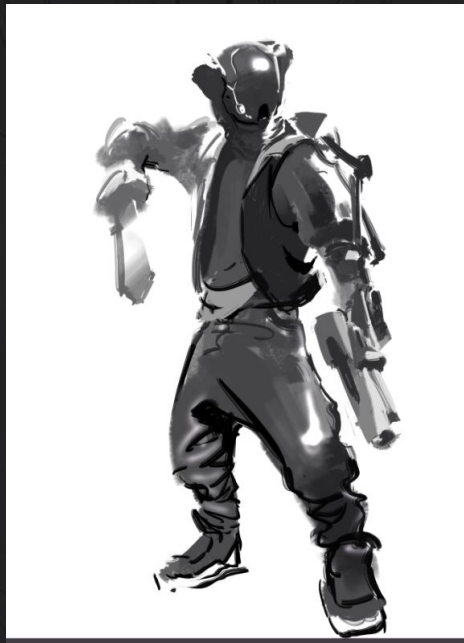


Creature Progress

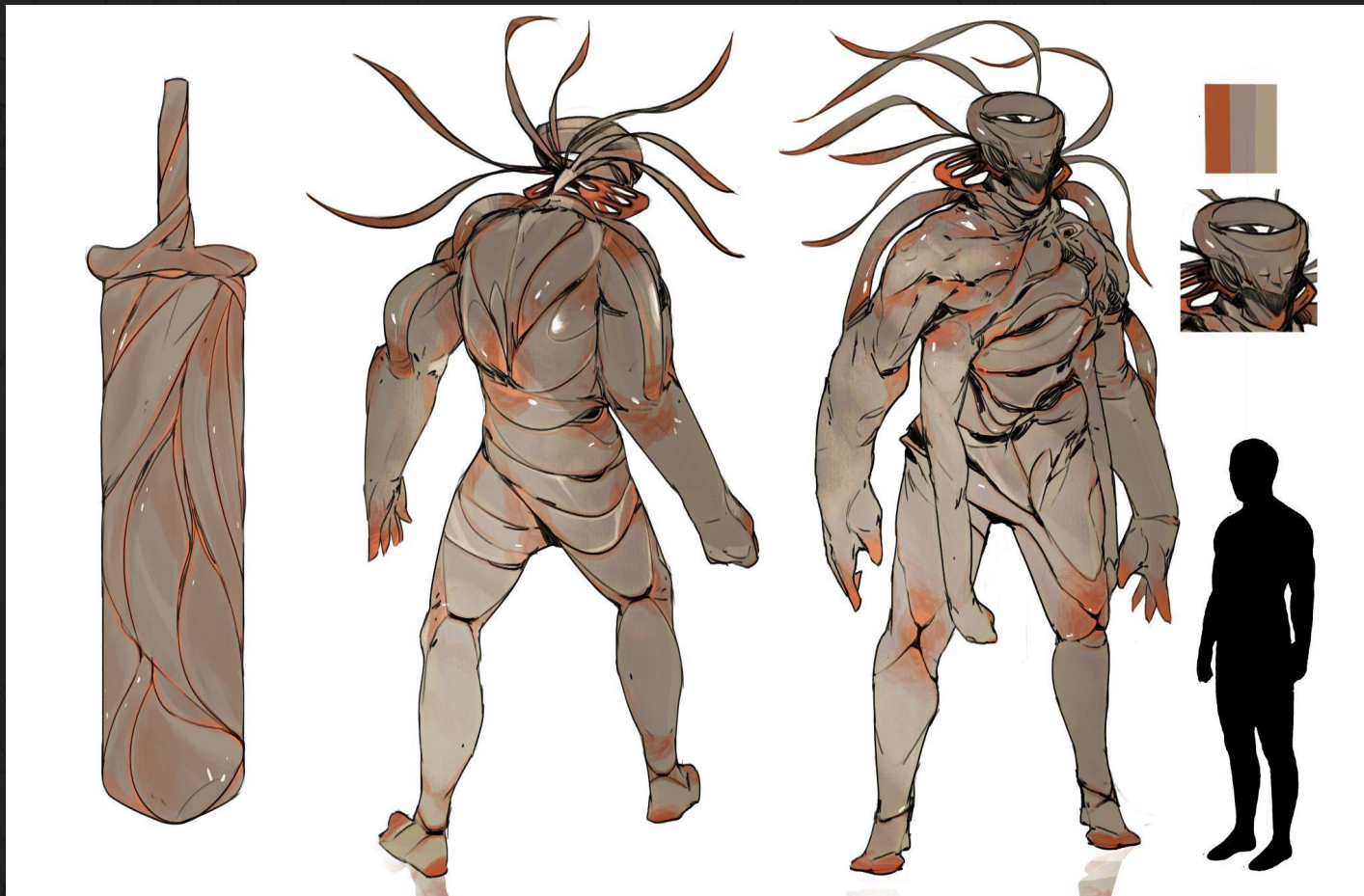




Creature Progress

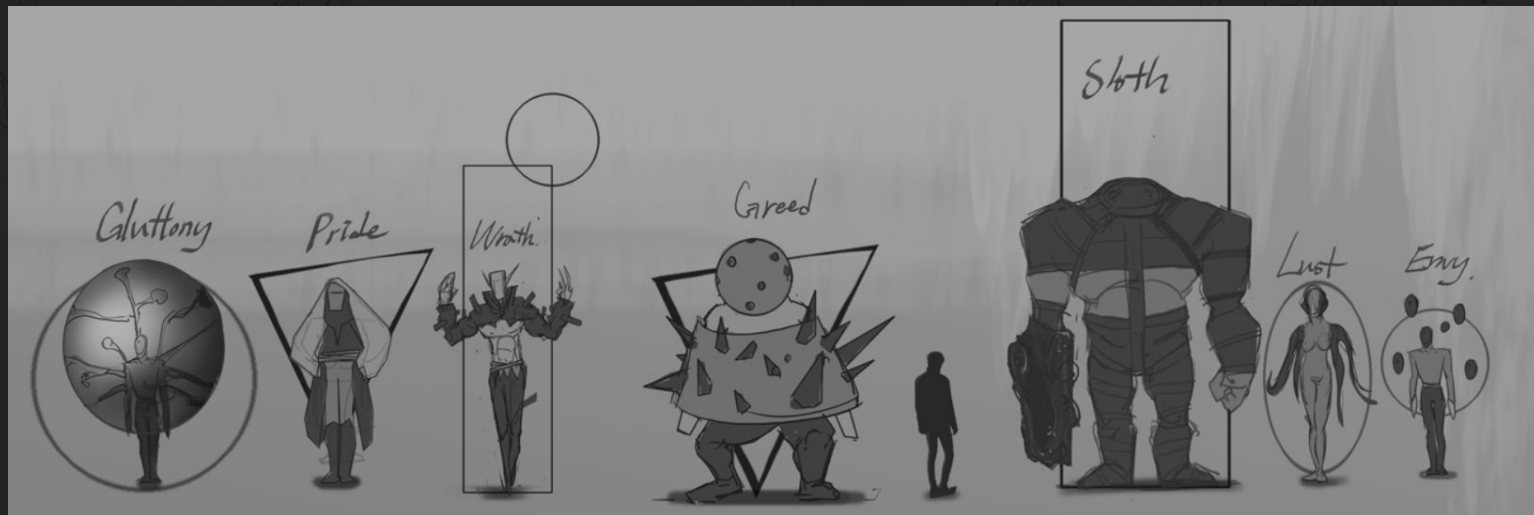


Creature Progress



Creature
Progress





Creature Progress

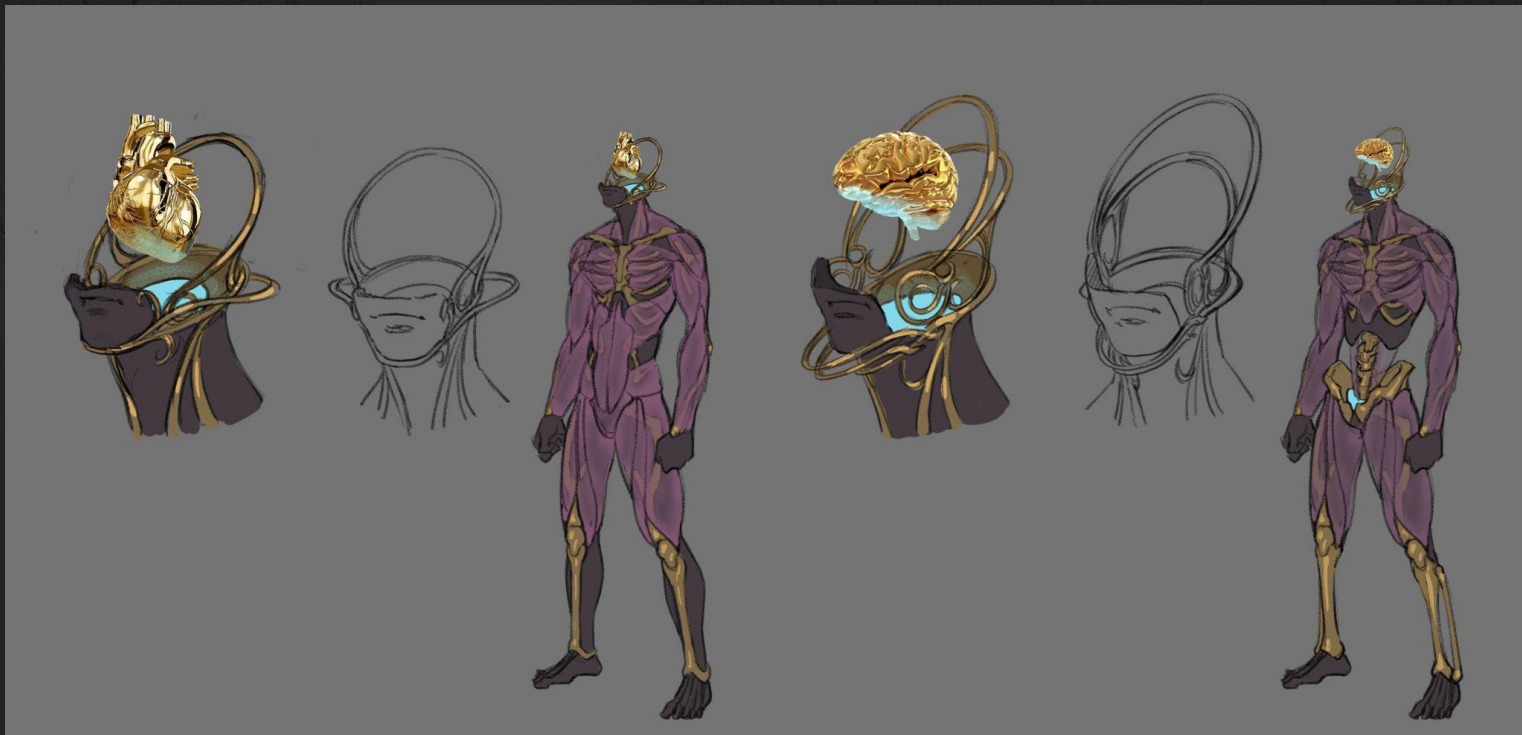




Creature Progress



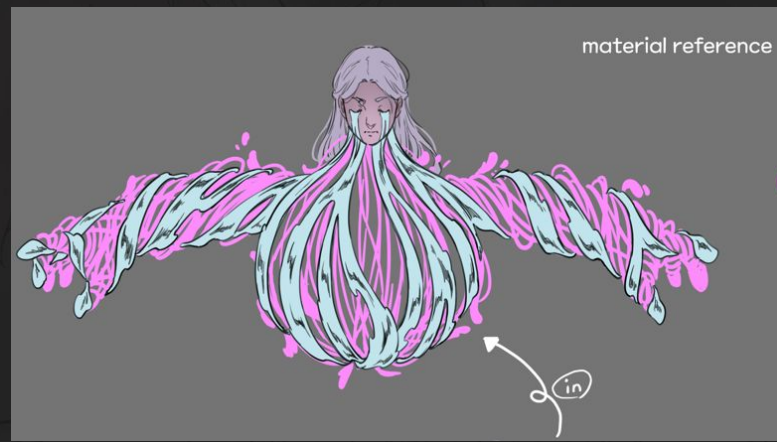
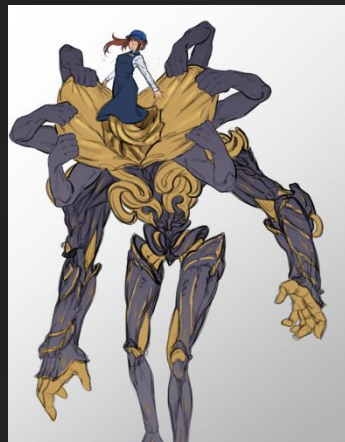
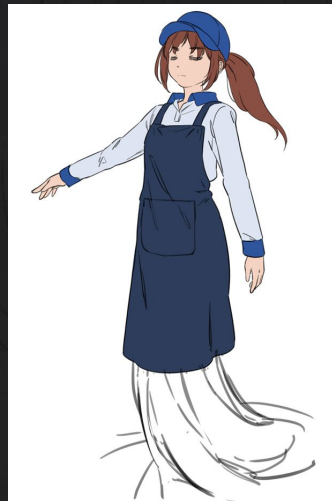
Creature Progress



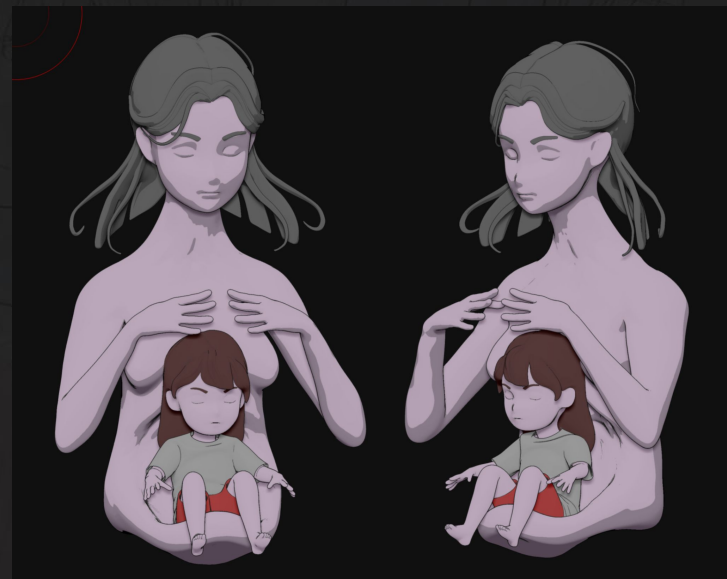
Creature Progress



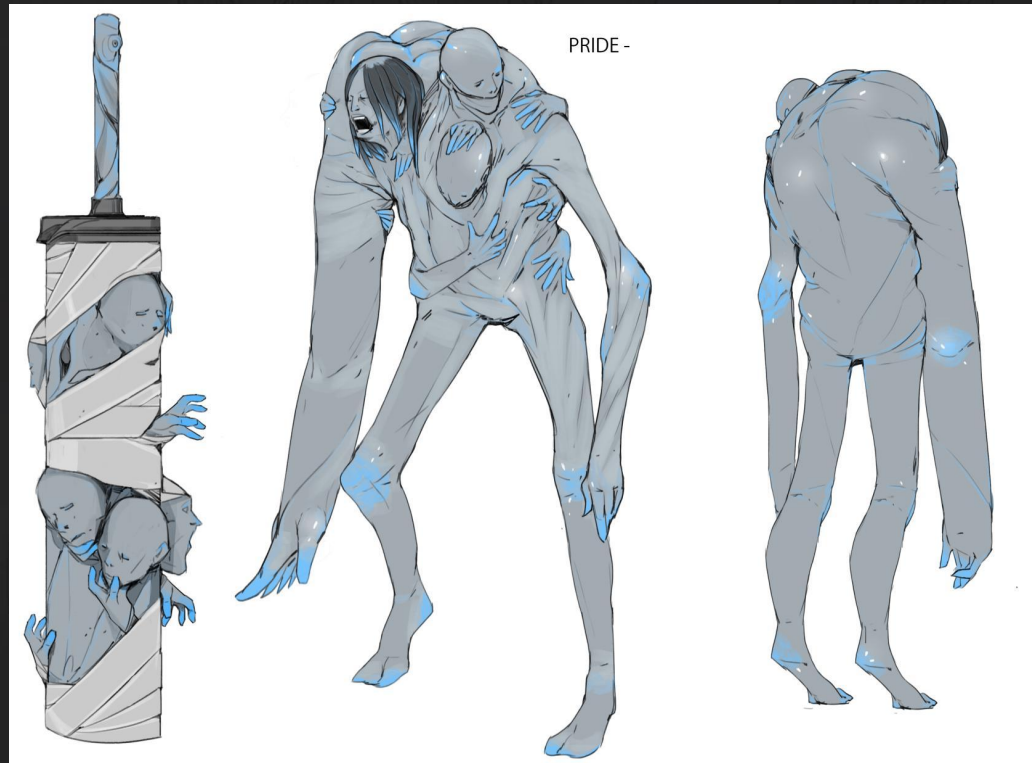
Creature Progress



Creature Progress



Creature Progress





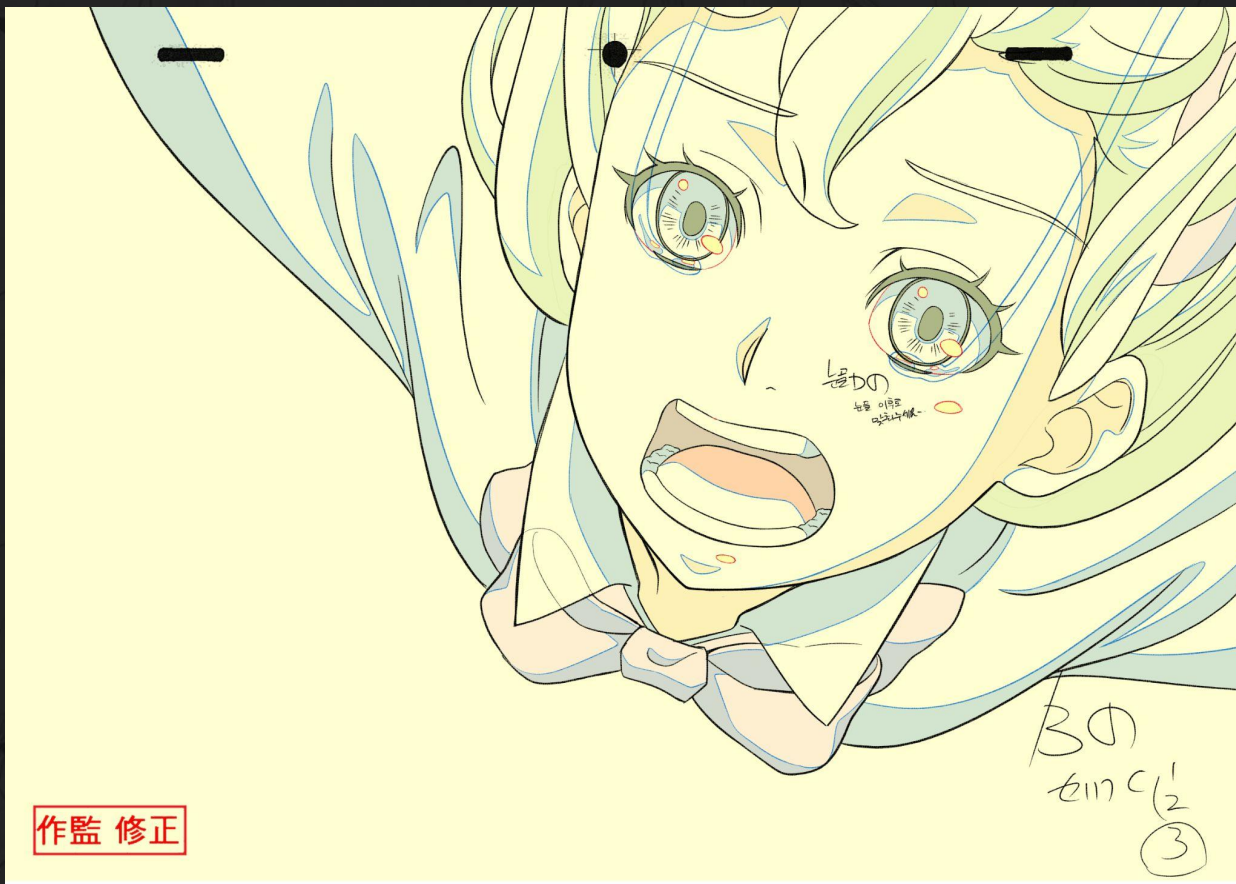
MOVING PICTURES

Moving Pictures

CUT	PANEL	ACTION	DIALOGUE	TIME
A-0		본스에게 최후의 일격을 날리는 주인공. [입중선 BG]		
		다가와서		
		한번 몸을 숙이고		
		주먹을 내지른다		

CUT	PANEL	ACTION	DIALOGUE	TIME
		주먹 전설		
			[END]	2+0

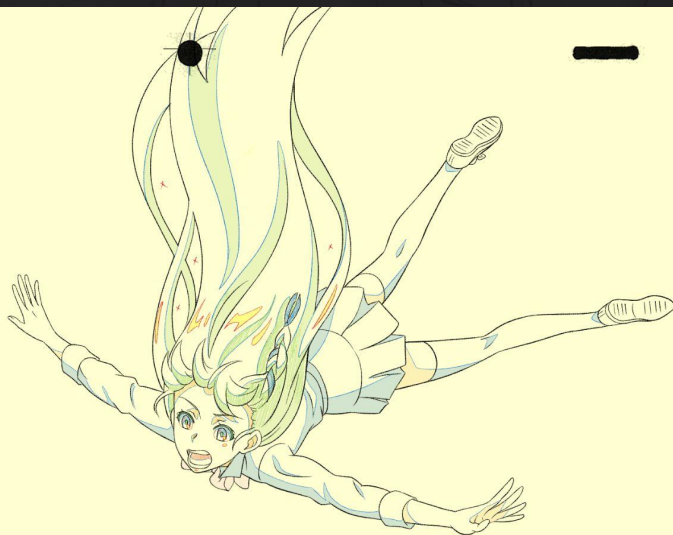
CUT	PANEL	ACTION	DIALOGUE	TIME
B-1		[SLOW] 갈라진 오른팔이 공중에서 천천히 떨어진다. 충격받은 표정의 주인공. 주인공 헤어, 옷 나뉘기		
			[B] white	2+0
B-2		[SLOW] 위의 클로즈업, 빛방울이 천천히 떨어진다. 주인공 헤어 나뉘기하면서 천천히 기울어진다		
				3+0



作監修正

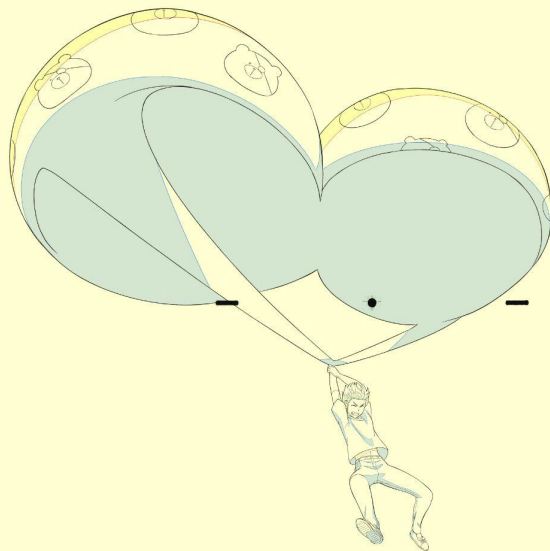
30
enc 1/2
③





B(2)

作監 修正



作監修正

A(19)



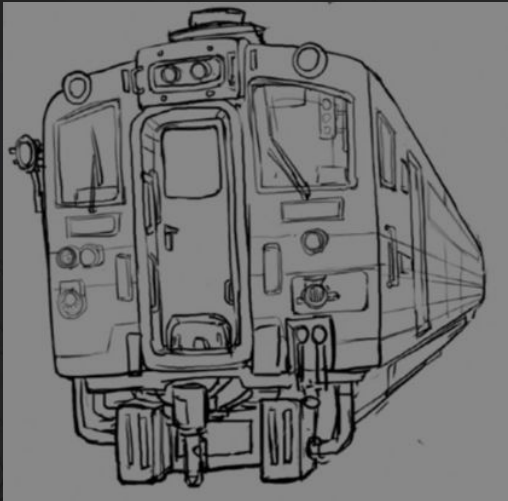
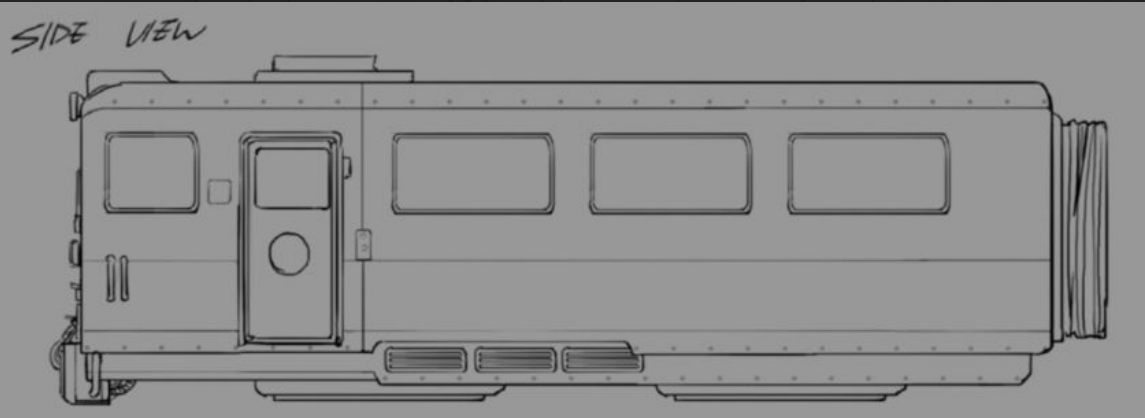
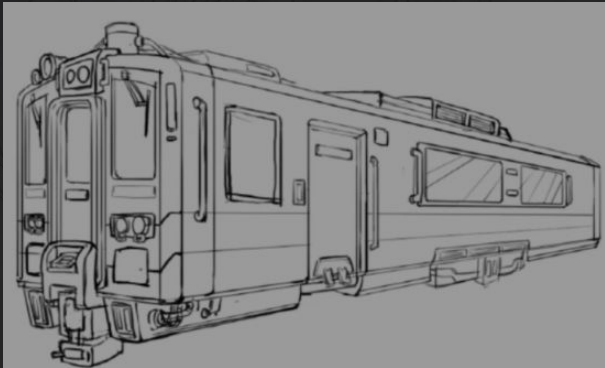
4472
B①
C②
D③

作監 修正

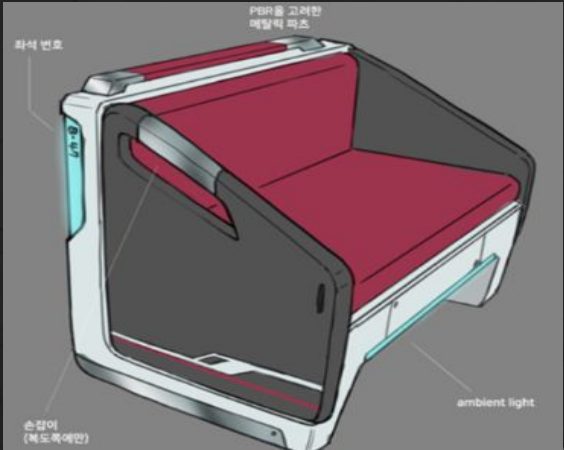
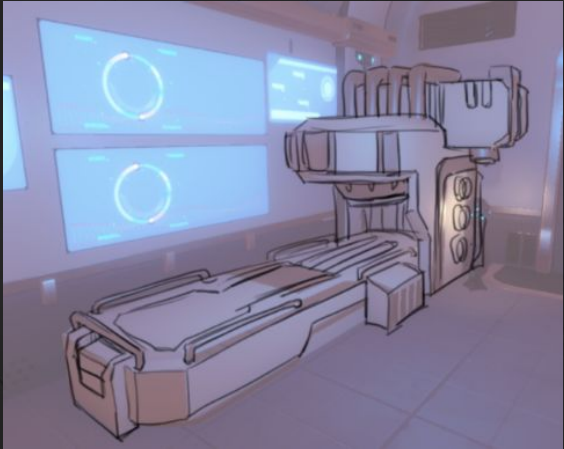
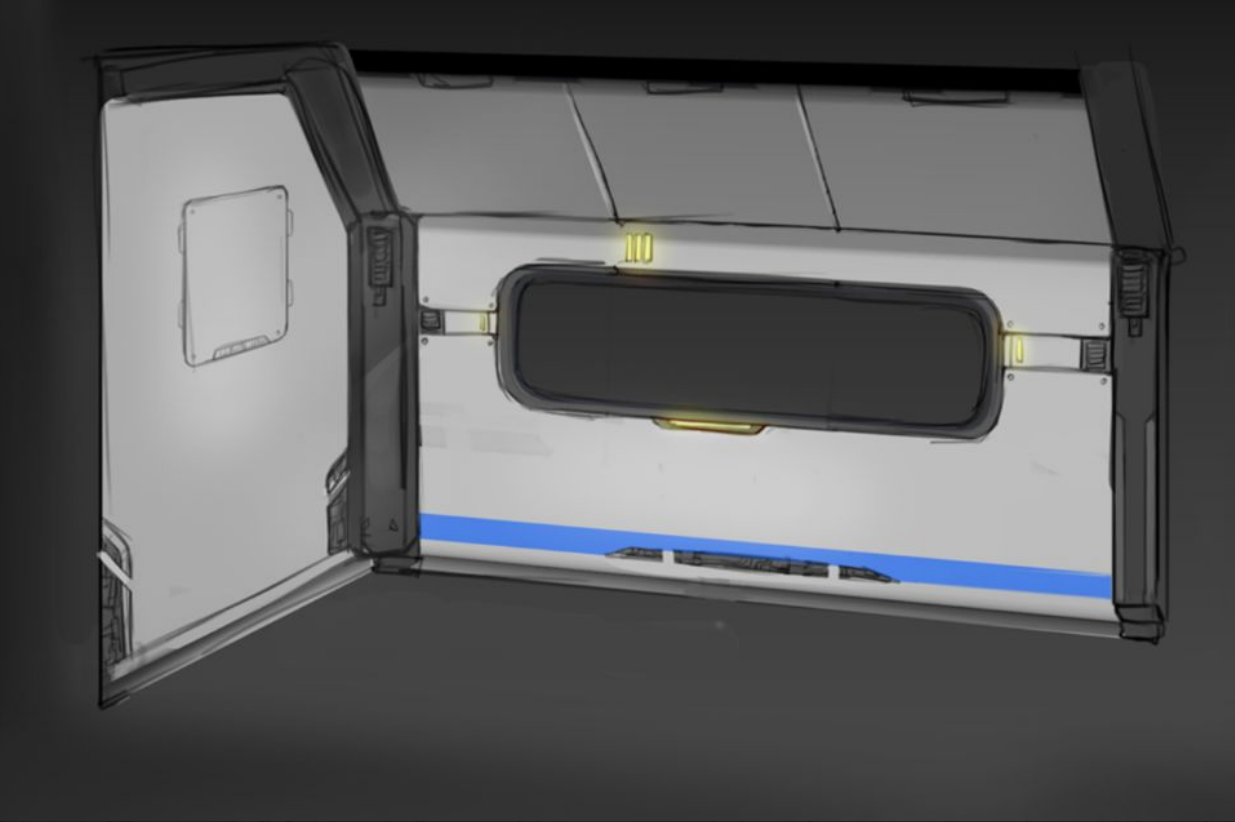




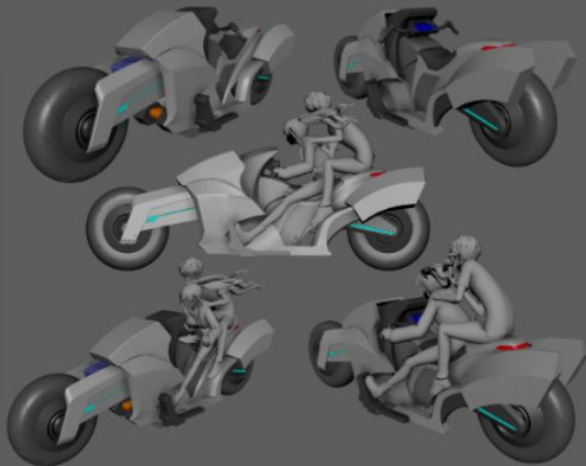
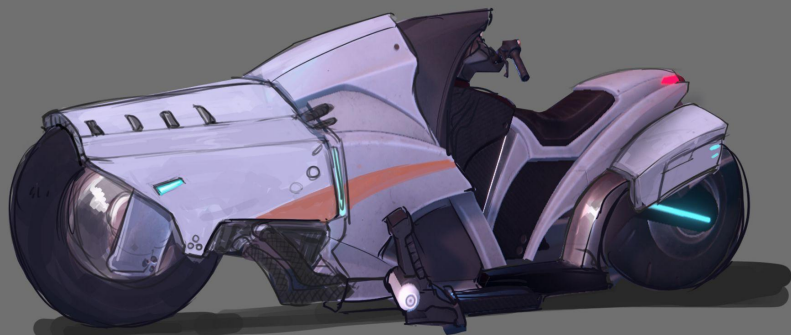
ENVIRONMENTS



Train concept



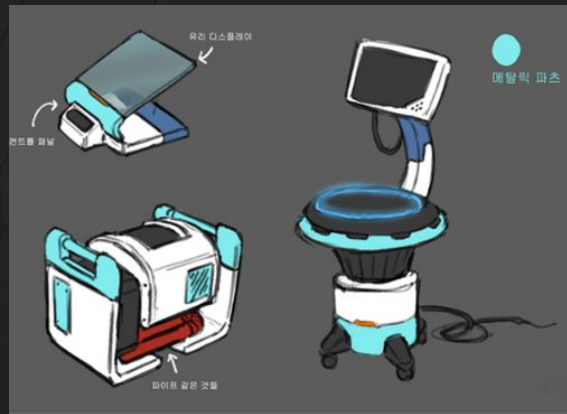
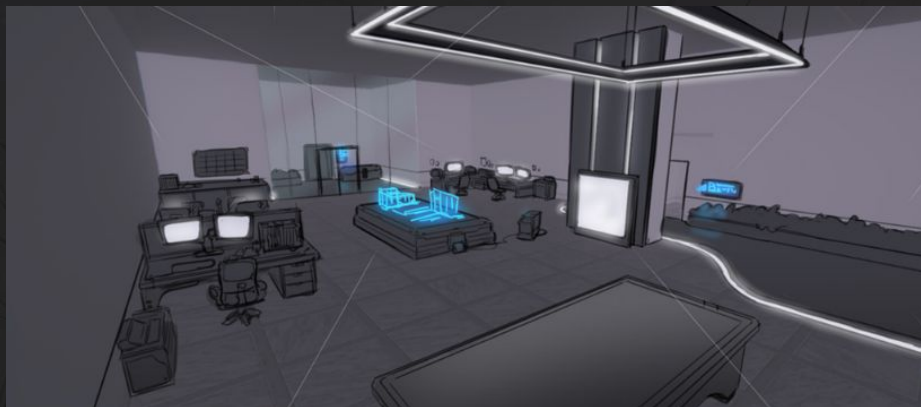
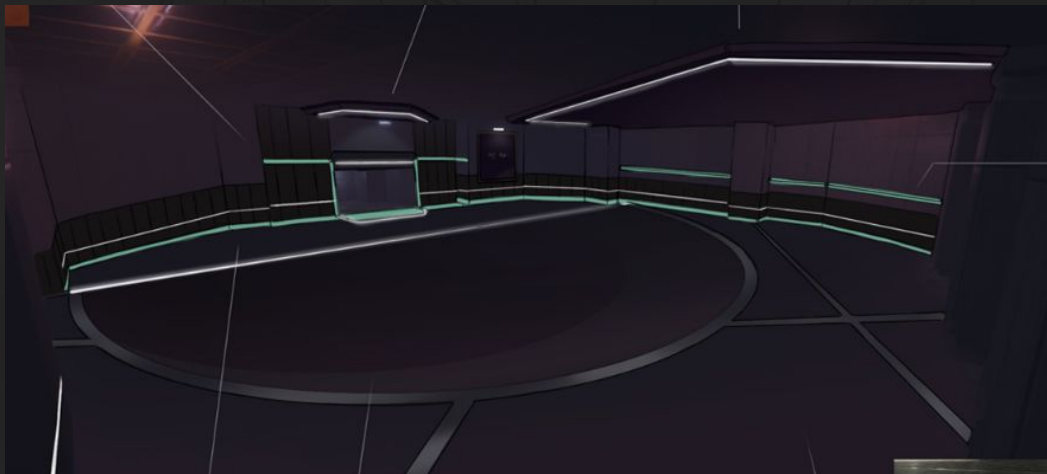
Bike concept



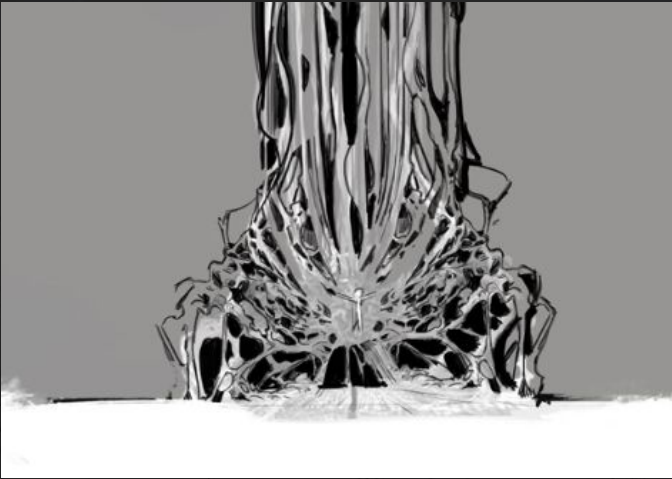
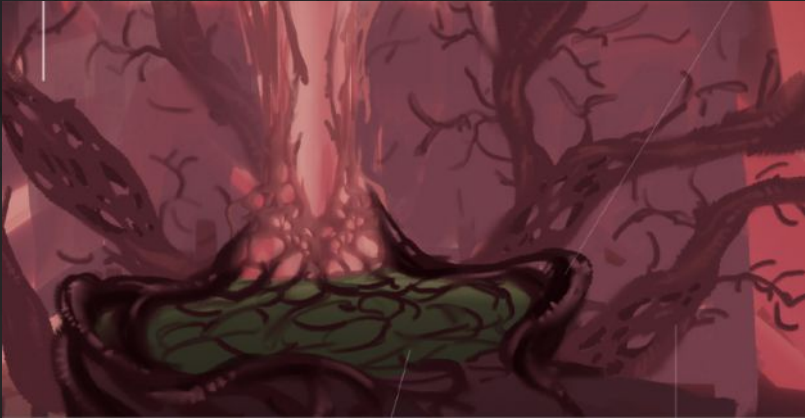
Back



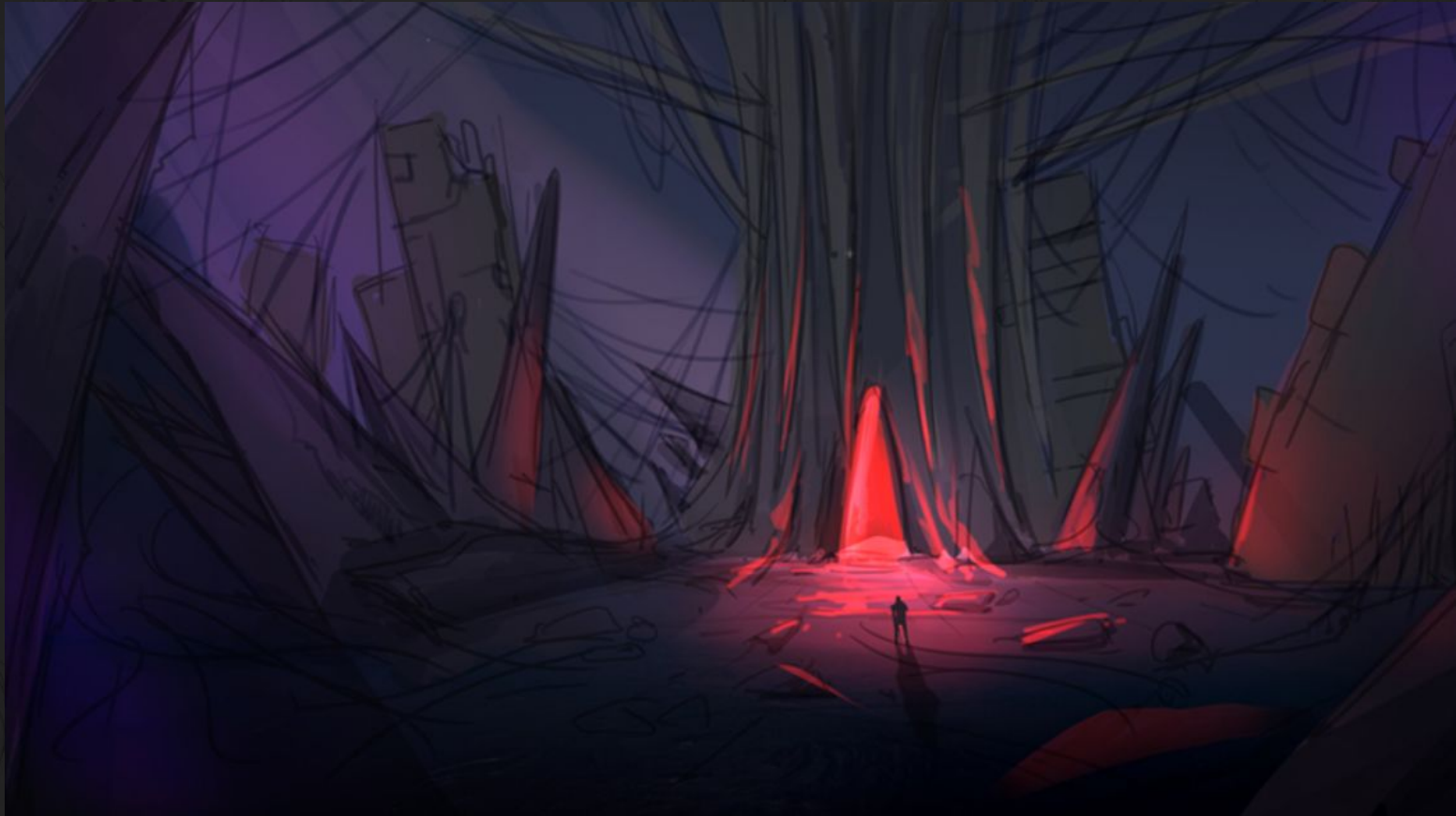
Environment concept



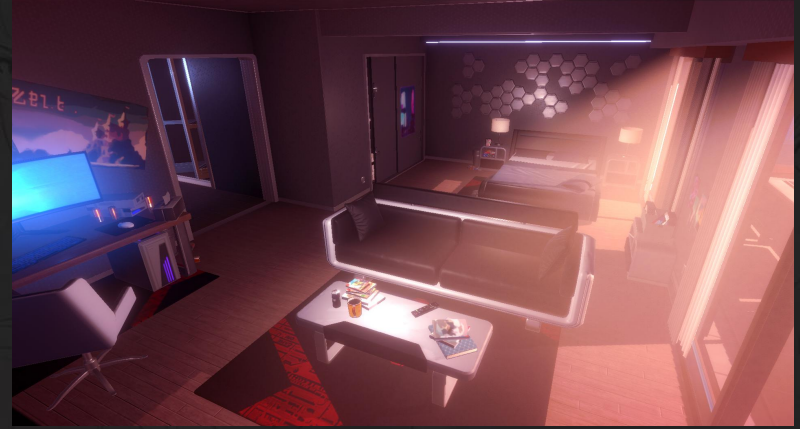
Red tree concept



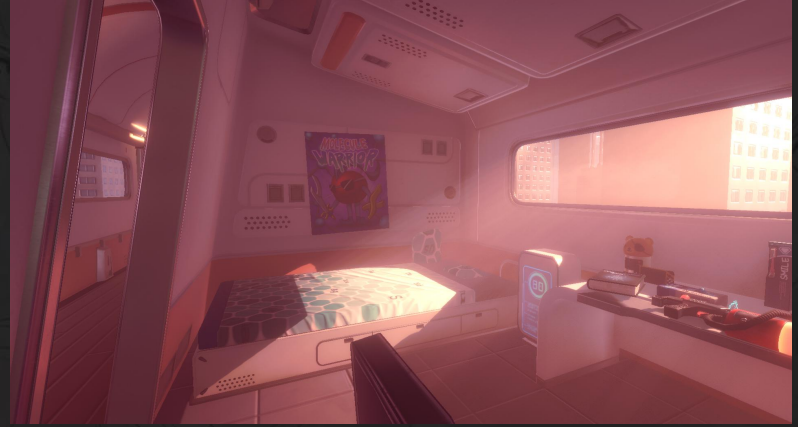
Early Environment concept



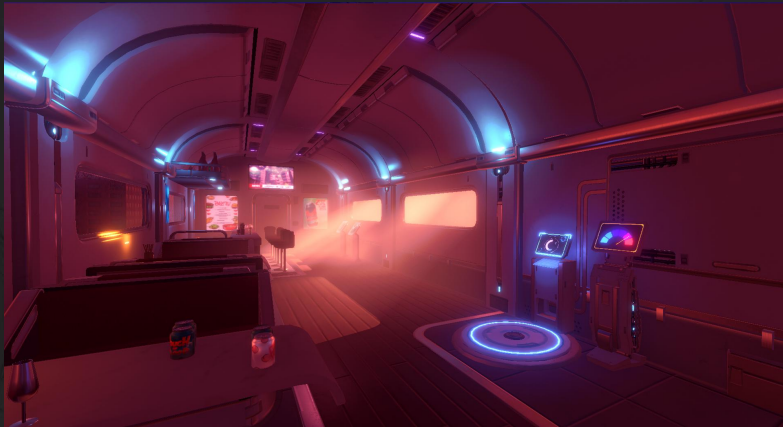
Game Environment - Protagonist Room



Game Environment - Train Interior



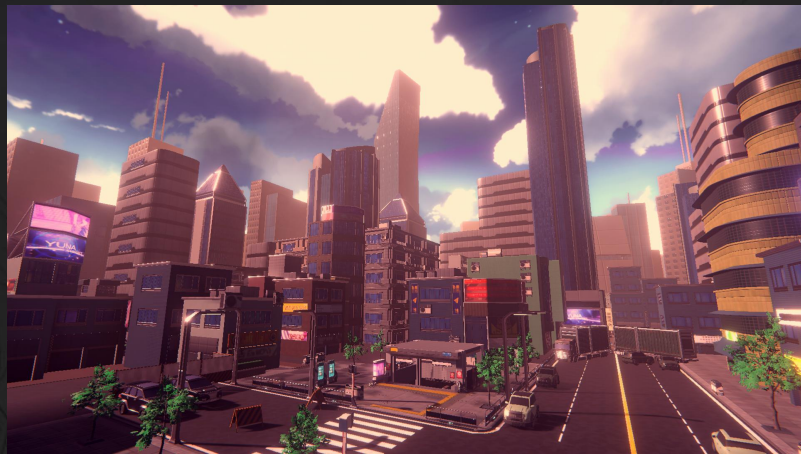
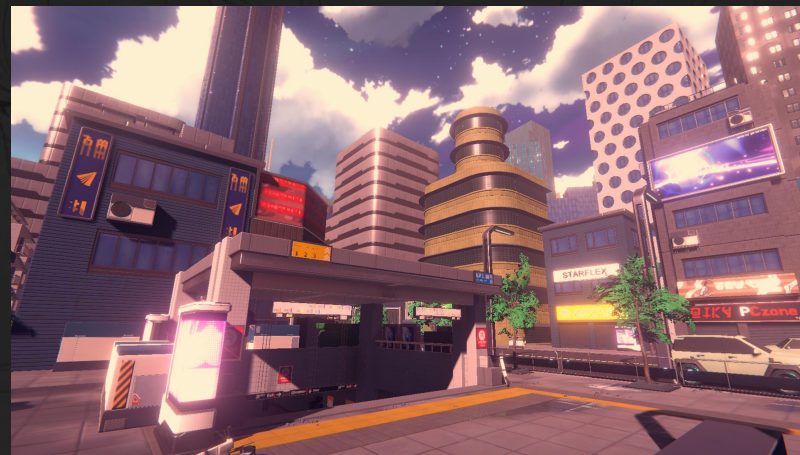
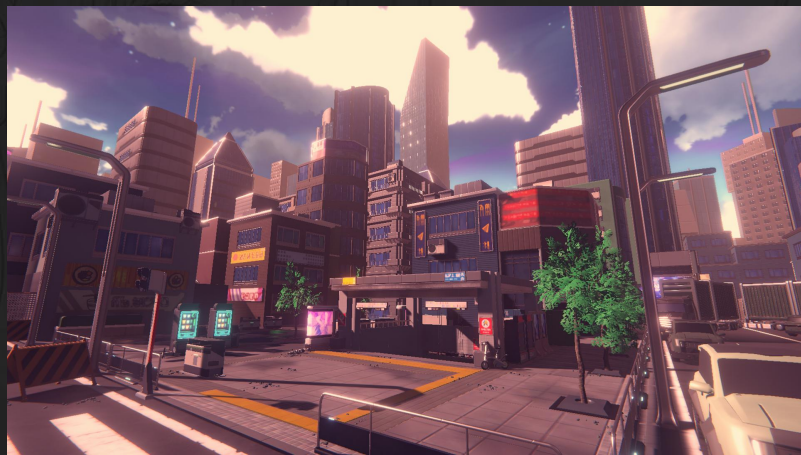
Game Environment - Train Interior



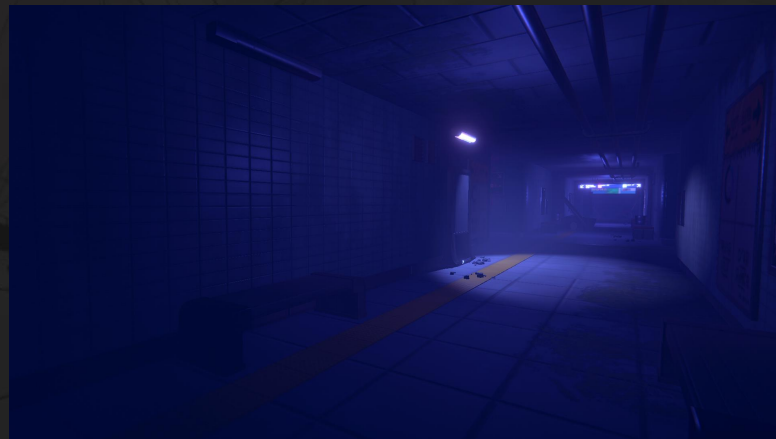
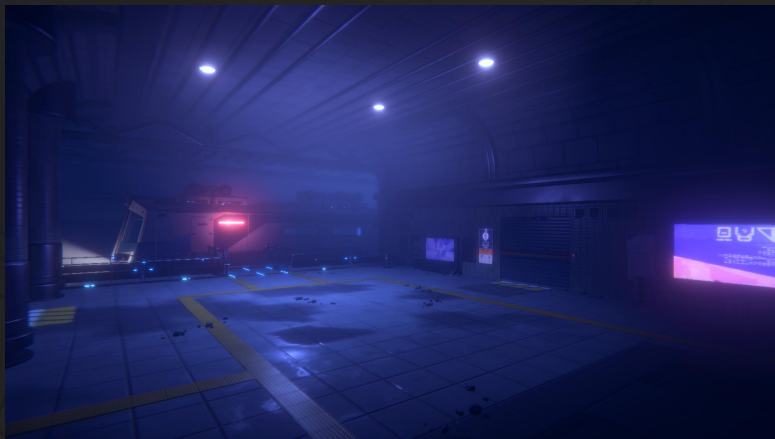
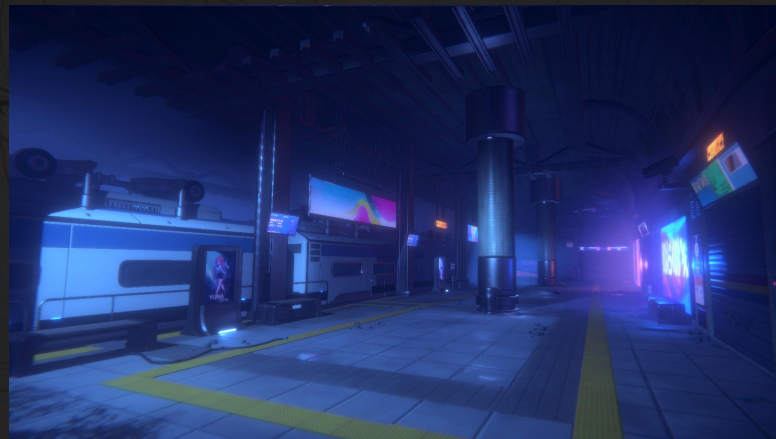
Game Environment - Train Interior



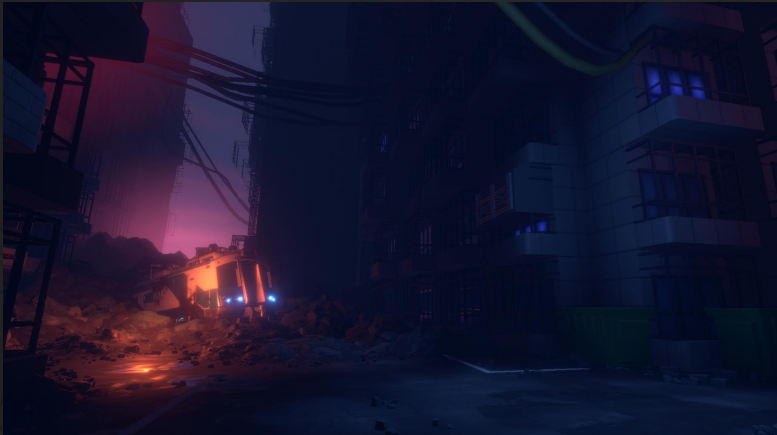
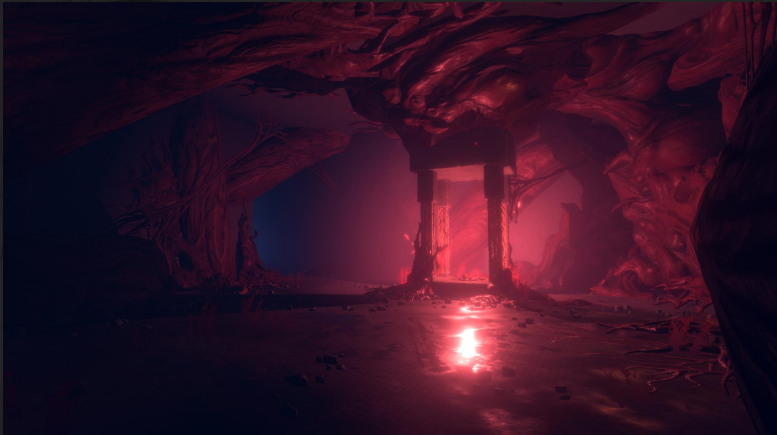
Game Environment - City



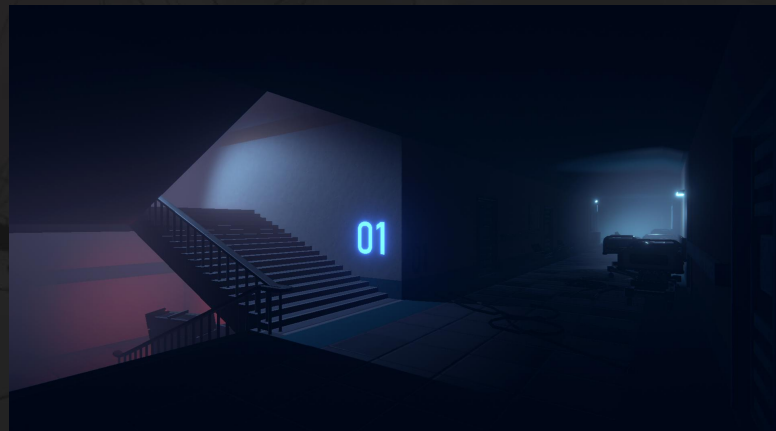
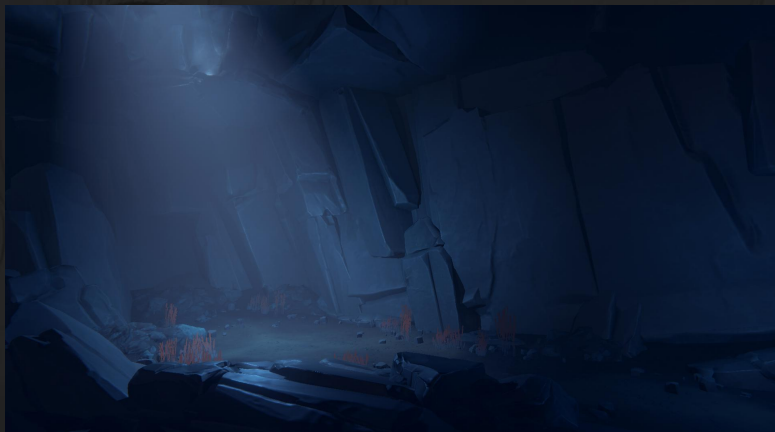
Game Environment - Act 1



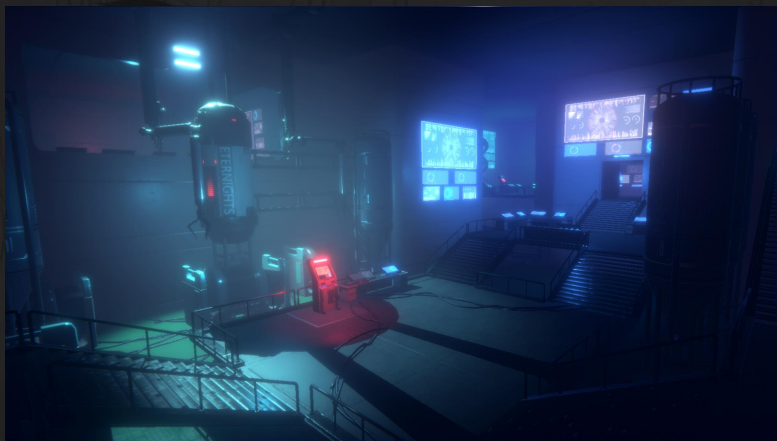
Game Environment - Act 2



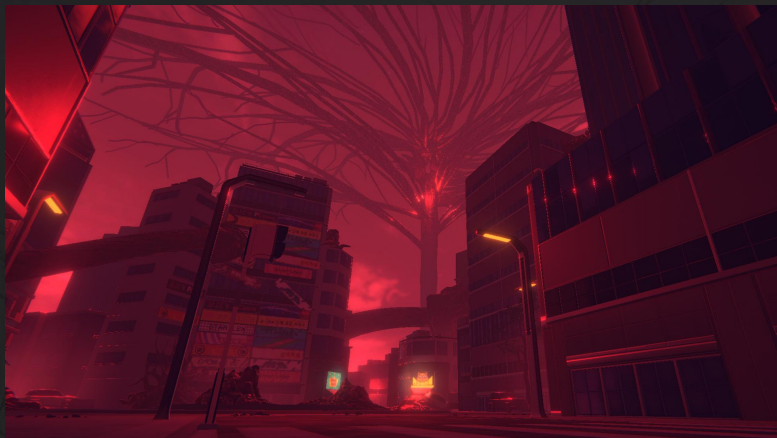
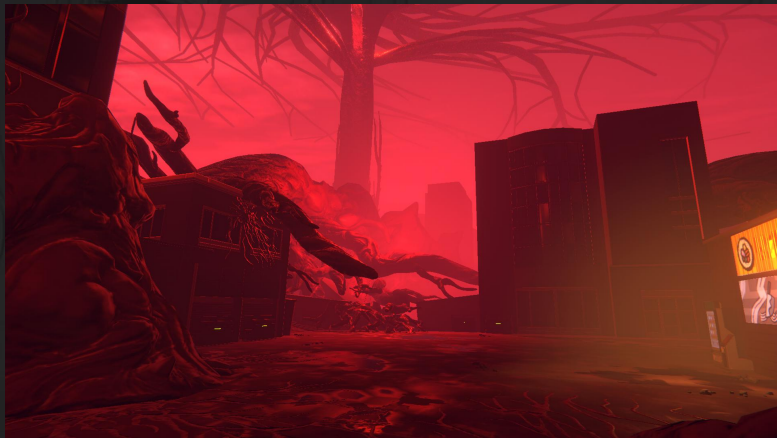
Game Environment - Act 3



Game Environment - Act 4



Game Environment - Act 5





VFX



















UI

DialogueBox_Character



YUNA

The artifact you were given has an element of her power, which will protect you. The artifact you were given has an element of her power, which will protect you.



MIN

The artifact you were given has an element of her power, which will protect you.



MIER

The artifact you were given has an element of her power, which will protect you. The artifact you were given has an element of her power, which will protect you.



CHANI

The artifact you were given has an element of her power, which will protect you.



YOHAN

The artifact you were given has an element of her power, which will protect you.



SIA

The artifact you were given has an element of her power, which will protect you.



NAME

The artifact you were given has an element of her power, which will protect you.




NAME

The artifact you were given has an element of her power, which will protect you.



RELATIONSHIP SOCIAL STAT SAVE / LOAD TUTORIAL OPTIONS

- SPRINT
- ATTACK
- LOCK ON
- DODGE
- ELEMENTAL FIST
- SKILL TREE & ESSENCES
- WHITE ESSENCE**
- BLACK ESSENCE
- DATEABLE SKILL
- SOCIAL STATS
- CITY SCAVENGING
- CALENDAR TIP
- CALENDAR
- WEAKNESS



WHITE ESSENCE

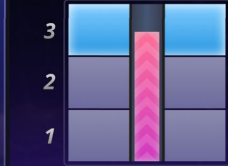


Stronger enemies have Barriers that can only be broken via Elemental Fist.

Every attack that lands on your enemy charges your Elemental Gauge. Once the gauge is fully charged, press **F** to use the Elemental Fist.

Tip: Perfect Dodge give you a boost to the gauge.

+ Select Confirm Exit

60

2/9



RANK 3

- INSTANT HEAL LV.2 UNLOCKED
- SKILL GAUGE DISCOUNT LV.1 UNLOCKED
- ELEMENTAL FIRE 3 ACQUIRED
- ELEMENTAL FIRE 3 ACQUIRED

RELATIONSHIP SOCIAL STAT SAVE / LOAD TUTORIAL OPTIONS

WHITE ESSENCE 2 BLACK ESSENCE

YOUR NAME Rank 3


YUNA Level 3

CHANI Level 2

MIN Level 2

SIA Level 1

SKILLS



BARRIER LV.3 CLAIMED

Protects you from enemy 3 times. This will block any kind of attack including Boss's. More text goes here. More text goes here.

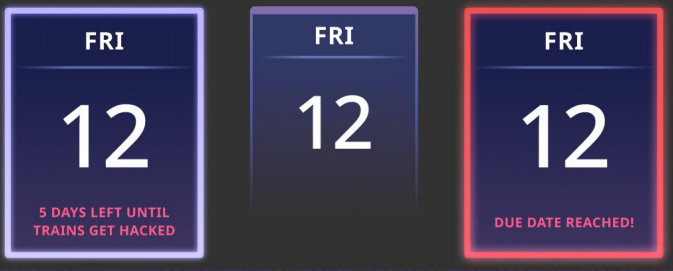
Hold **F** for tutorial.

+ Select Confirm Exit

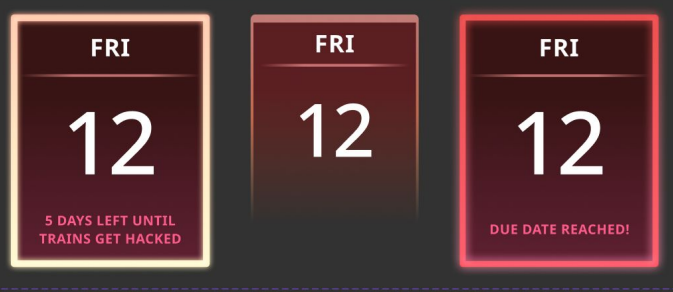
Calendar_Icon



Calendar_Night



Calendar_Day



DIALOGUE BOX

DialogueBox_Yuna

DialogueBox_Protagonist

DialogueBox_Yohan

DialogueBox_Min

DialogueBox_Teal

DialogueBox_Sia

DialogueBox_Closed

Dialogue_Narrative_Gradation

Di...
Di... Di... Di... Di...
Di... Di...
Dialogue_Thinking

❖ Dialogue

YUNA

Last time I was in a locker there was more space.

❖ DialogueBox_Decision

So your mind is slow?

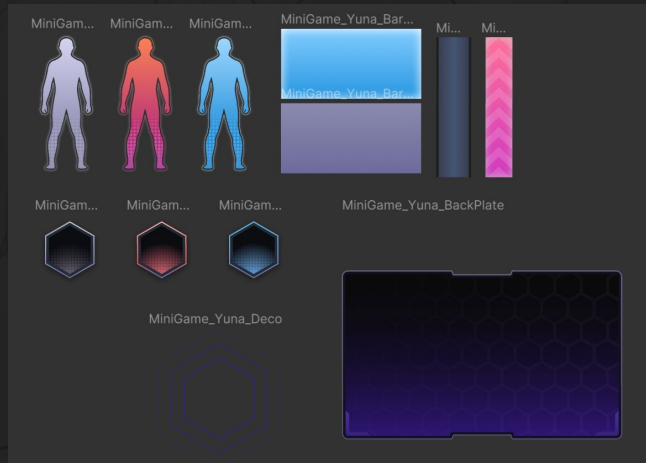
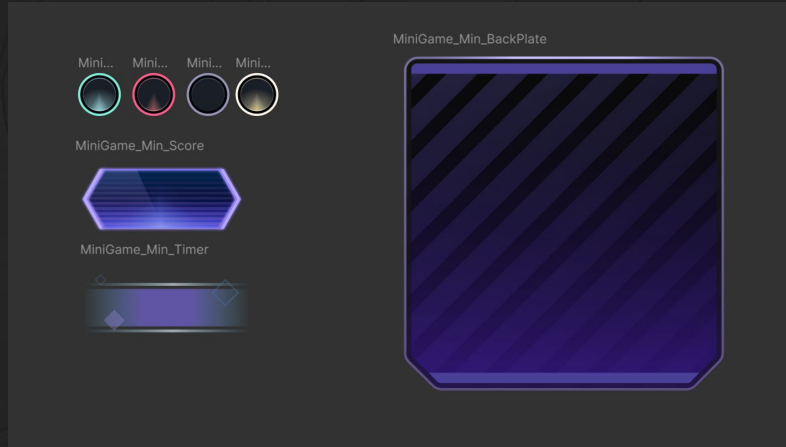
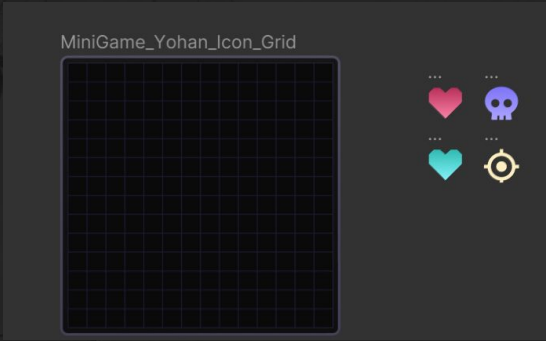
But this isn't life.

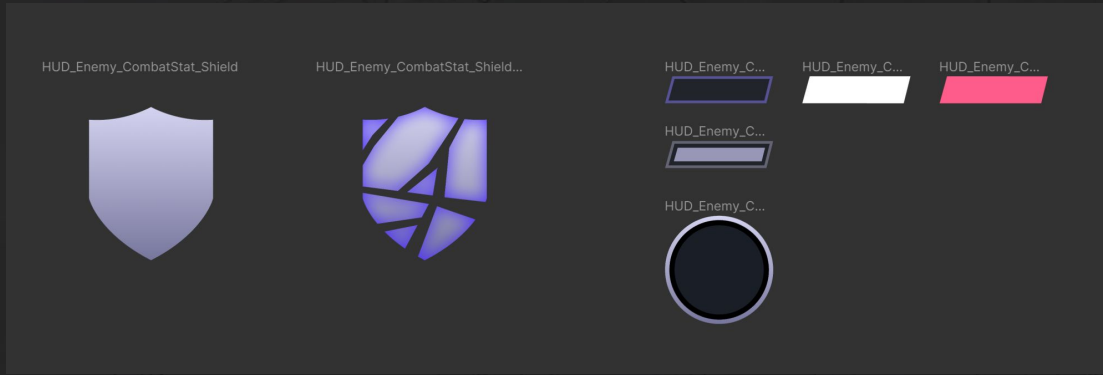
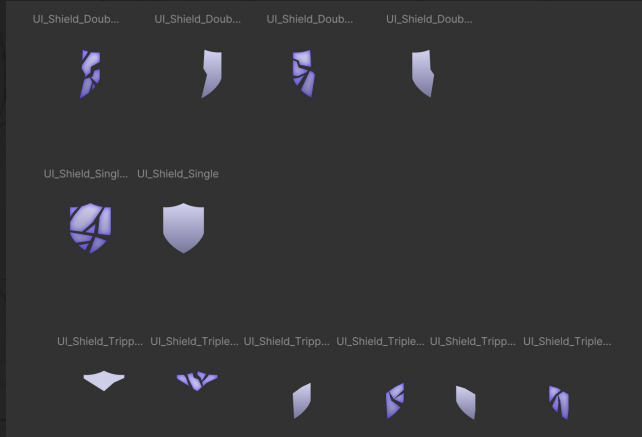
❖ SocialStat_Notification

COURAGE +1

❖ Thought Bubble

Yup... she's not listening.





❖ Countdown

5 DAYS LEFT

1 DAY LEFT

5 DAYS LEFT

1 DAY LEFT

❖ Component 135

JUNE

10

JUNE

10

❖ Spec_Small

EXPRESSION

ACCEPTANCE

COURAGE

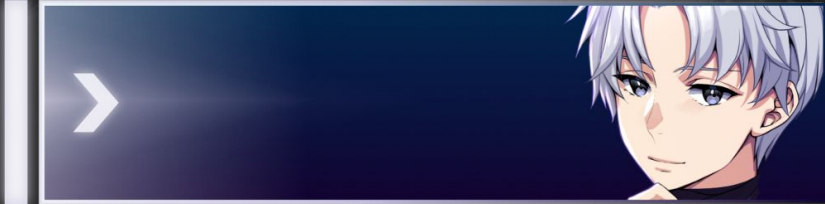
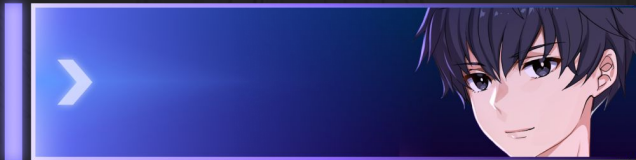
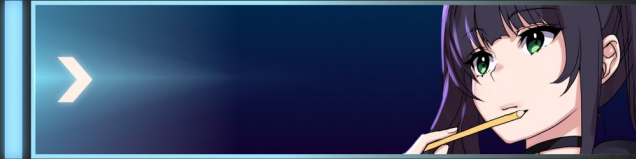
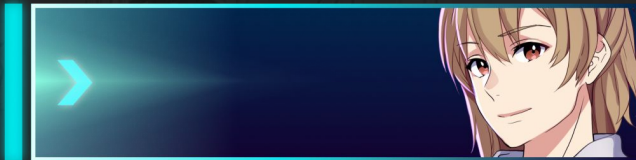
CONFIDENCE

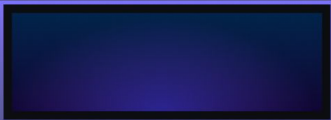
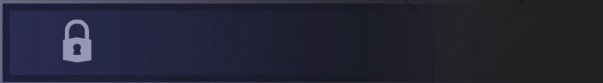
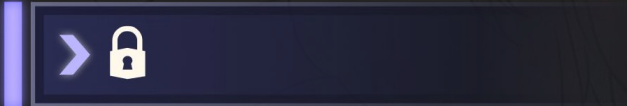
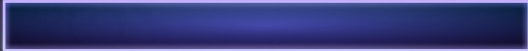
❖ Frame 122

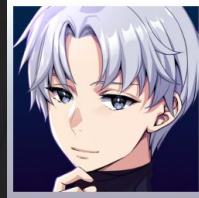
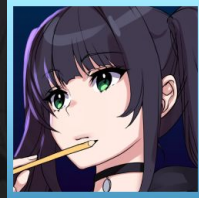
EXPRESSION

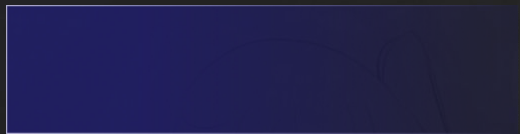
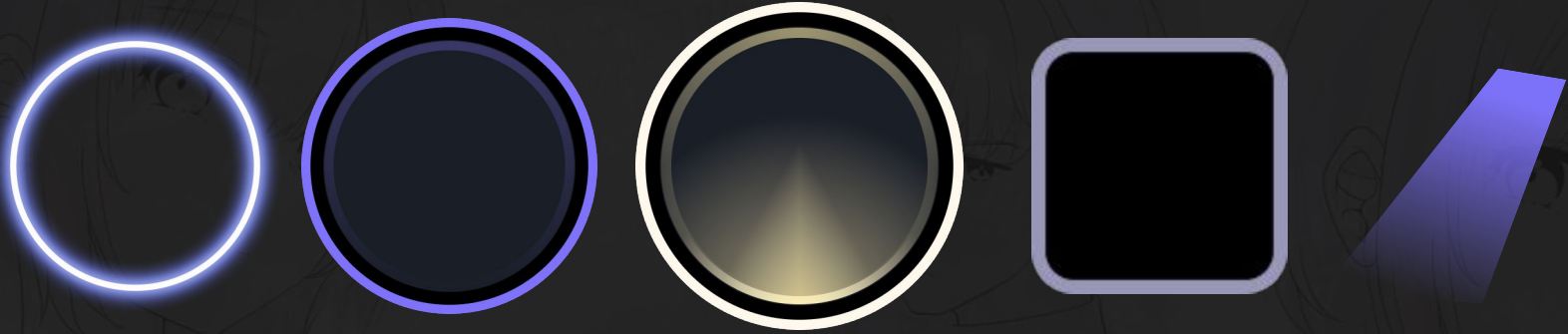






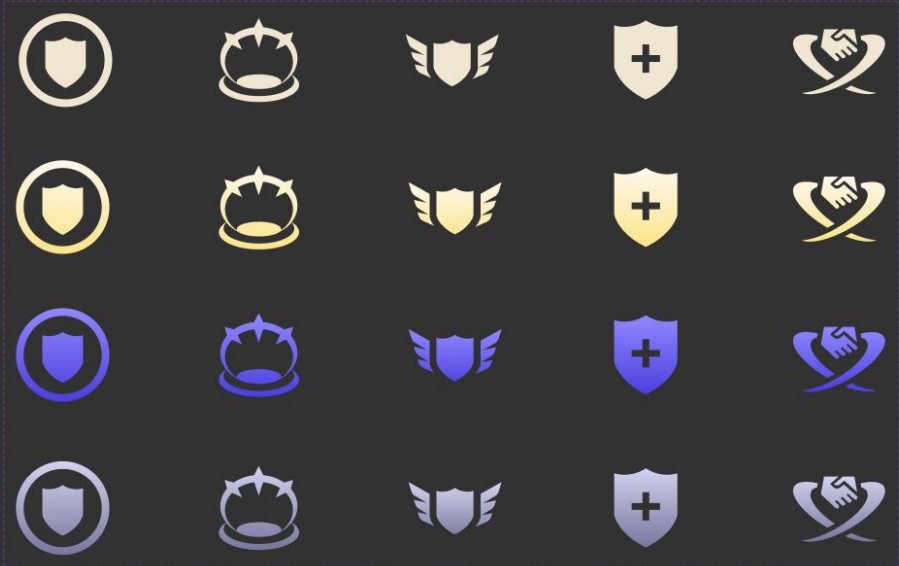






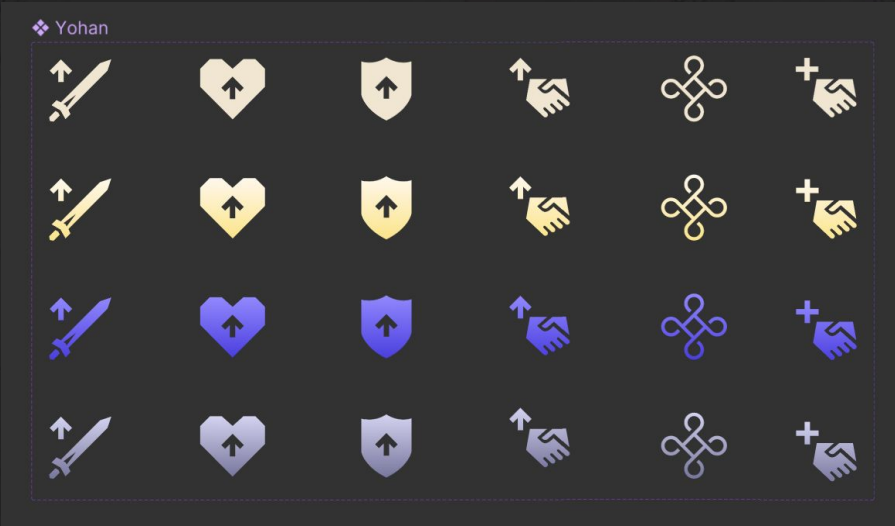


❖ Min









The background features several anime-style character portraits in a dark grey, monochromatic style. The characters have large, expressive eyes and various hairstyles, including short hair and pigtails. They are arranged in a scattered pattern across the page.

Thank you!